

SAP Front End Installation Guide



LP.BCINSFRONTEND

Release 710 Compilation 2



Copyright

© Copyright 2008 SAP AG. All rights reserved.

No part of this publication may be reproduced or transmitted in any form or for any purpose without the express permission of SAP AG. The information contained herein may be changed without prior notice.

Some software products marketed by SAP AG and its distributors contain proprietary software components of other software vendors.

Microsoft, Windows, Excel, Outlook, and PowerPoint are registered trademarks of Microsoft Corporation.

IBM, DB2, DB2 Universal Database, System i, System i5, System p, System p5, System x, System z, System z10, System z9, z10, z9, iSeries, pSeries, xSeries, zSeries, eServer, z/VM, z/OS, i5/OS, S/390, OS/390, OS/400, AS/400, S/390 Parallel Enterprise Server, PowerVM, Power Architecture, POWER6+, POWER6, POWER5+, POWER5, POWER, OpenPower, PowerPC, BatchPipes, BladeCenter, System Storage, GPFS, HACMP, RETAIN, DB2 Connect, RACF, Redbooks, OS/2, Parallel Sysplex, MVS/ESA, AIX, Intelligent Miner, WebSphere, Netfinity, Tivoli and Informix are trademarks or registered trademarks of IBM Corporation.

Linux is the registered trademark of Linus Torvalds in the U.S. and other countries.

Adobe, the Adobe logo, Acrobat, PostScript, and Reader are either trademarks or registered trademarks of Adobe Systems Incorporated in the United States and/or other countries.

Oracle is a registered trademark of Oracle Corporation.

UNIX, X/Open, OSF/1, and Motif are registered trademarks of the Open Group. Citrix, ICA, Program Neighborhood, MetaFrame, WinFrame, VideoFrame, and MultiWin are trademarks or registered trademarks of Citrix Systems, Inc.

HTML, XML, XHTML and W3C are trademarks or registered trademarks of W3C®, World Wide Web Consortium, Massachusetts Institute of Technology.

Java is a registered trademark of Sun Microsystems, Inc

JavaScript is a registered trademark of Sun Microsystems, Inc., used under license for technology invented and implemented by Netscape.

SAP, R/3, xApps, xApp, SAP NetWeaver, Duet, PartnerEdge, ByDesign, SAP Business ByDesign, and other SAP products and services mentioned herein as well as their respective logos are trademarks or registered trademarks of SAP AG in Germany and in several other countries all over the world. All other product and service names mentioned are the trademarks of their respective companies. Data contained in this document serves informational purposes only. National product specifications may vary.

These materials are subject to change without notice. These materials are provided by SAP AG and its affiliated companies ("SAP Group") for informational purposes only, without representation or warranty of any kind, and SAP Group shall not be liable for errors or omissions with respect to the materials. The only warranties for SAP Group products and services are those that are set forth in the express warranty statements accompanying such products and services, if any. Nothing herein should be construed as constituting an additional warranty.

Terms for Included Open Source Software

This SAP software contains also the third party open source software products listed below. Please note that for these third party products the following special terms and conditions shall apply.

SAP License Agreement for STLport

SAP License Agreement for STLport
between

SAP Aktiengesellschaft
Systems, Applications, Products in Data Processing
Neurottstrasse 16
69190 Walldorf
Germany
(hereinafter: SAP)

and

you
(hereinafter: Customer)

1. Subject Matter of the Agreement

- a. SAP grants Customer a non-exclusive, non-transferable, royalty-free license to use the STLport.org C++ library (STLport) and its documentation without fee.
- b. By downloading, using, or copying STLport or any portion thereof Customer agrees to abide by the intellectual property laws, and to all of the terms and conditions of this Agreement.
- c. The Customer may distribute binaries compiled with STLport (whether original or modified) without any royalties or restrictions.
- d. Customer shall maintain the following copyright and permission notices on STLport sources and its documentation unchanged:
Copyright 2001 SAP AG
- e. The Customer may distribute original or modified STLport sources, provided that:
 - The conditions indicated in the above permission notice are met;
 - The following copyright notices are retained when present, and conditions provided in accompanying permission notices are met:

Copyright 1994 Hewlett-Packard Company

Copyright 1996,97 Silicon Graphics Computer Systems, Inc.

Copyright 1997 Moscow Center for SPARC Technology.

Copyright 1999,2000 Boris Fomitchev

Copyright 2001 SAP AG

Permission to use, copy, modify, distribute and sell this software and its documentation for any purpose is hereby granted without fee, provided that the above copyright notice appear in all copies and that both that copyright notice and this permission notice appear in supporting documentation. Hewlett-Packard Company makes no representations about the suitability of this software for any purpose. It is provided "as is" without express or implied warranty.

Permission to use, copy, modify, distribute and sell this software and its documentation for any purpose is hereby granted without fee, provided that the above copyright notice appear in all copies and that both that copyright notice and this permission notice appear in supporting documentation. Silicon Graphics makes no representations about the suitability of this software for any purpose. It is provided "as is" without express or implied warranty.

Permission to use, copy, modify, distribute and sell this software and its documentation for any purpose is hereby granted without fee, provided that the above copyright notice appear in all copies and that both that copyright notice and this permission notice appear in supporting documentation. Moscow Center for SPARC Technology makes no representations about the suitability of this software for any purpose. It is provided "as is" without express or implied warranty.

Boris Fomitchev makes no representations about the suitability of this software for any purpose. This material is provided "as is", with absolutely no warranty expressed or implied. Any use is at your own risk. Permission to use or copy this software for any purpose is hereby granted without fee, provided the above notices are retained on all copies. Permission to modify the code and to distribute modified code is granted, provided the above notices are retained, and a notice that the code was modified is included with the above copyright notice.

Permission to use, copy, modify, distribute and sell this software and its documentation for any purpose is hereby granted without fee, provided that the above copyright notice appear in all copies and that both that copyright notice and this permission notice appear in supporting documentation. SAP makes no representations about the suitability of this software for any purpose. It is provided with a limited warranty and liability as set forth in the License Agreement distributed with this copy. SAP offers this liability and warranty obligations only towards its customers and only referring to its modifications.

2. Support and Maintenance

SAP does not provide software maintenance for the STLport. Software maintenance of the STLport therefore shall be not included.

All other services shall be charged according to the rates for services quoted in the SAP List of Prices and Conditions and shall be subject to a separate contract.

3. Exclusion of warranty






As the STLport is transferred to the Customer on a loan basis and free of charge, SAP cannot guarantee that the STLport is error-free, without material defects or suitable for a specific application under third-party rights. Technical data, sales brochures, advertising text and quality descriptions produced by SAP do not indicate any assurance of particular attributes.

4. Limited Liability

- a. Irrespective of the legal reasons, SAP shall only be liable for damage, including unauthorized operation, if this (i) can be compensated under the Product Liability Act or (ii) if caused due to gross negligence or intent by SAP or (iii) if based on the failure of a guaranteed attribute.
- b. If SAP is liable for gross negligence or intent caused by employees who are neither agents or managerial employees of SAP, the total liability for such damage and a maximum limit on the scope of any such damage shall depend on the extent to which its occurrence ought to have anticipated by SAP when concluding the contract, due to the circumstances known to it at that point in time representing a typical transfer of the software.
- c. In the case of Art. 4.2 above, SAP shall not be liable for indirect damage, consequential damage caused by a defect or lost profit.

- d. SAP and the Customer agree that the typical foreseeable extent of damage shall under no circumstances exceed EUR 5,000.
- e. The Customer shall take adequate measures for the protection of data and programs, in particular by making backup copies at the minimum intervals recommended by SAP. SAP shall not be liable for the loss of data and its recovery, notwithstanding the other limitations of the present Art. 4 if this loss could have been avoided by observing this obligation.
- f. The exclusion or the limitation of claims in accordance with the present Art. 4 includes claims against employees or agents of SAP.

Icons in Body Text

Icon	Meaning
	Caution
	Example
	Note
	Recommendation
	Syntax

Additional icons are used in SAP Library documentation to help you identify different types of information at a glance. For more information, see *Help on Help → General Information Classes and Information Classes for Business Information Warehouse* on the first page of any version of *SAP Library*.

Typographic Conventions

Type Style	Description
<i>Example text</i>	Words or characters quoted from the screen. These include field names, screen titles, pushbuttons labels, menu names, menu paths, and menu options. Cross-references to other documentation.
Example text	Emphasized words or phrases in body text, graphic titles, and table titles.
EXAMPLE TEXT	Technical names of system objects. These include report names, program names, transaction codes, table names, and key concepts of a programming language when they are surrounded by body text, for example, SELECT and INCLUDE.
Example text	Output on the screen. This includes file and directory names and their paths, messages, names of variables and parameters, source text, and names of installation, upgrade and database tools.
Example text	Exact user entry. These are words or characters that you enter in the system exactly as they appear in the documentation.
<Example text>	Variable user entry. Angle brackets indicate that you replace these words and characters with appropriate entries to make entries in the system.
EXAMPLE TEXT	Keys on the keyboard, for example, F2 or ENTER.

SAP Front End Installation Guide.....	8
1. Introduction	8
1.1 What's New in Compilation2?	9
1.2 General Features Overview	11
1.3 SAP Notes for the Installation	11
1.4 Information Available on SAP Service Marketplace.....	12
1.5 Naming Conventions.....	12
2. Planning	12
2.1 Installation Scenarios	13
2.2 Hardware and Software Requirements.....	15
2.3 Installation and Maintenance Flow.....	15
3. Preparation.....	16
3.1 Setting Up an Installation Server.....	17
3.2 Administering an Installation Server.....	19
3.3 Adding New SAP Front-End Components to an Existing Installation Server	20
3.4 Updating Products on the Installation Server with a Newer Version	21
3.5 Deleting Products from the Installation Server.....	21
3.6 Creating and Maintaining Installation Packages	22
3.6.1 Creating a New Installation Package.....	22
3.6.2 Configuring Packages and Scripting Events	23
3.6.3 Changing the Package Content.....	24
3.6.4 Deleting an Installation Package	25
3.6.5 Creating a Package Definition File	26
3.6.6 Creating and Deploying Self-Installing Packages	26
3.7 Patching the Installation Server	27
3.8 Configuring Local Security Handling	28
3.9 Configuring SAP Automatic Workstation Update.....	29
4. Installation Process.....	31
4.1 Installation of the SAP Front End.....	31
4.1.1 Installing Components from an Installation Server.....	31
4.1.1.1 Installing Packages Configured by the Administrator	34
4.1.1.2 Installing Packages Using the Logon Script	36
4.1.2 Installing Components Locally from a Distribution Medium.....	36
4.2 Update of the SAP Front End.....	39
4.2.1 Updating the Front End from an Installation Server	39
4.2.2 Patching a Standalone Front End.....	40
4.2.3 Enabling User-Specific Automatic Update of the Front End.....	40
5 Additional Information	41
5.1 Removing an Installation Server	42

5.2 Uninstalling the SAP Front End.....	42
5.3 FAQs	42
5.4 Diagnosing Front-End Software Installations using NWCheckWorkstation.....	43
5.5 Viewing Log and Error Files	43
5.6 Command-Line Parameters	44
5.7 Component List	46

SAP Front End Installation Guide

Purpose

This documentation describes how to install and distribute the SAP front-end software on Windows.

The document contains the following sub-sections:

[Introduction \[page 8\]](#)

[Planning \[page 12\]](#)

[Preparation \[page 16\]](#)

[Installation Process \[page 31\]](#)

[Additional Information \[page 41\]](#)

1 Introduction

Scope of this Document

The SAP GUI family consists of:

- SAP GUI for Windows

This GUI is described in detail here.

- SAP GUI for Java

SAP GUI for Java is a generic SAP GUI that runs on a variety of platforms including Windows, Mac OS X, Linux, and various UNIX platforms. It has the same look and feel as the Windows version with the exception of the platform-specific window design.

This GUI is not described here. Instead, you can find documentation describing the installation of SAP GUI for Java in either of the following places:

- In the folder *PRES2/GUI/DOC* on the *SAP NetWeaver Presentation DVD*.
- On SDN under:

<https://www.sdn.sap.com/irj/sdn/sap-gui> → *Installation* → *SAP GUI for Java*

The installation instructions for SAP GUI for the Java environment are in chapter 4 of the document *PlatinManual*.

- SAP GUI for HTML

SAP GUI for HTML is based on the SAP Internet Transaction Server (ITS), which has been integrated into the kernel of the SAP Web Application Server as of SAP NetWeaver 04 (SAP Web AS 6.40). If you are using SAP systems based on SAP NetWeaver releases older than SAP NetWeaver 04, make sure that the standalone ITS is installed on a dedicated server. On the desktop, a suitable browser is sufficient for both standalone and integrated ITS.

This GUI is not described here since the SAP GUI for HTML does not need SAP software to be deployed on the client. Instead, you can find documentation describing the standalone installation of the ITS in either of the following places:

- In the folder *SERV1/DOCU* on the *SAP NetWeaver Presentation DVD*.

- On SAP Service Marketplace at <https://service.sap.com/instguidesNW>.

SAP GUI for HTML and SAP GUI for Java do **not** have all the capabilities of SAP GUI for Windows. Some applications such as SAP BI or SAP SCM require the SAP GUI for Windows. More information: Master Guides for the relevant SAP products

More information about the SAP GUI family: <https://www.sdn.sap.com/irj/sdn/sap-gui>

Platforms

SAP GUI for Windows provides support for the most common Microsoft Windows platforms:

- Windows 2000
- Windows XP
- Windows 2003 Server
- Windows Vista

More information: SAP Product Availability Matrix at <https://service.sap.com/pam> or **SAP Note 66971**

Compatibility

SAP GUI for Windows 7.10 is compatible with all SAP products based on SAP NetWeaver 2004s and all earlier releases of SAP software that are still supported by SAP. For SAP systems based on newer releases than SAP NetWeaver 2004s, you need at least SAP GUI for Windows 7.10 since SAP GUI for Windows 6.20 and 6.40 are not compatible with these systems.



Only one version of SAP GUI is possible.

SAP GUI for Windows uses the Microsoft Controls technology, which means that all controls are registered locally during the installation. As a result, the system database contains an entry indicating where each control can be found. Since the system always registers the latest controls, only the most recently installed version of a control is available at any time.

This means that on a single computer only one version of SAP GUI for Windows can be installed. During installation of a new SAP GUI release, any older SAP GUI release present on the computer is uninstalled.

1.1 What's New in Compilation 2?

This section describes what is new in Compilation 2:

- Change in tree structure: For technical reasons, the components 'BW Add-On', 'KW Add-on', 'Tweak-GUI for SAP GUI', and 'Engineering Client Viewer for SAP GUI (ECL)' have been moved to a higher position in the tree structure. They can now be found on the same level as SAP GUI for Windows and are not part of the SAP GUI for Windows node anymore. Thus, from Compilation 2 on, these components have to be selected explicitly, which means independent of SAP GUI for Windows.

Apart from the new positioning, nothing has changed. There are still separate patches for BW and KW add-ons and the ECL. The internal composition of the components remains unchanged. In addition, you still need the SAP GUI to install any of the components. Note also that BW and KW add-on patches that are delivered after the creation of 7.10 Compilation 2 (C2) are compatible with 7.10 C1 and C2.



In case of updating a computer which contains SAP GUI compilation 1, you may find the items mentioned above also in the old position in the tree structure. This has no technical implications.

- There are two new components in the tree structure on the same level as SAP GUI for Windows:

- SAP ISH Med Add-On

The planning grid is a graphical tool used for planning appointments in i.s.h.med. This component contains the latest version of the planning grid needed for i.s.h.med Release 7.0. The Sun Java Runtime Environment 1.4.2 or higher has to be installed on each client which runs the planning grid. Please, refer to SAP note 1013957 for further information.

- SAP Automatic Workstation Update

Whenever the installation server is patched, or the packages installed are updated, this service will update the workstation(s) and reboot them if necessary. The workstation updater works in two modes - one in the presence of a logged-on user and another in his or her absence:

- When a user is logged on, the user is informed of update availability and the update happens on the user's assent. The user is also informed if a reboot is necessary and the reboot is also only executed on the user's assent.
- If no user is logged on, the update is done automatically and the reboot (if necessary) is done automatically, too.



This service updates itself, when a patch of automatic workstation update is available.

- New automatic folder configuration for `NWCreateInstServer.exe`

With `NWCreateInstServer.exe`, the administrator creates the installation server before using it as a distribution point. During server creation, the administrator can mention the installation server path where he or she wants the installation server to be. With the new configuration feature, the folder is automatically shared and configured. The folder which is created will be made NULL-session accessible by default. Thus, it will be automatically shared on the network for everyone to read. If you do not want automatic configuration, you should use the command line parameter `DontConfigureServerPath`.

- As of Patch Level 8, you can create single-file self-installing `.exe`-packages via `NWSAPSetupAdmin.exe`.

Such a package contains only those files that belong to the components that are a part of the package. Thus, it reduces your network load in certain distribution scenarios where you previously had to make local copies of your installation source before installing.

This single-file self-installer can also install silently without user interaction.

1.2 General Features Overview

This section describes the general features of NetWeaver SAPSetup (NW SAPSetup):

- The multi-product installation tool lets you maintain not only the SAP GUI for Windows 7.10 but almost all Windows-based SAP front-end software on a single installation server.
- Installation server features, such as *Import Product*, help integrate additional SAP front-end components into an existing installation server.
- You can configure packages with multiple SAP front-end components.
- With NW SAPSetup you can manage multiple SAP front-end components that are deployed on the front ends.
- If available on the installation server, you can deploy multiple SAP front-end components on the front ends using a command on a single line.
- NW SAPSetup provides full-featured install, uninstall, update, and patch of SAP front-end components that are available on an installation server or distribution medium such as a DVD.
- Wizard-driven user interfaces let you manage the installation server easily.
- You can install new components, uninstall existing ones, and update the remaining components in one cycle.
- You can customize the installation of packages by programming events that support Visual Basic (VB) scripting.
- Local Security Handling (LSH), when configured, lets you deploy SAP components on front ends without requiring administrative privileges on all machines.
- An Automatic Workstation Update Service will update the workstations and reboot them if necessary, whenever the installation server is patched, or the packages installed are updated.
- The folder for installation server creation is automatically configured. By default, it is made NULL-session accessible. Thus, it will be automatically shared on the network for everyone to read. This feature can also be switched off.

1.3 SAP Notes for the Installation

You must read the following SAP Notes before you start the installation. These SAP Notes contain the most recent information about the installation, as well as corrections to the installation documentation.

Make sure that you have the up-to-date version of each SAP Note, which you can find on SAP Service Marketplace at <https://service.sap.com/notes>.

SAP Notes for the Installation

SAP Note Number	Description
456905	Composite SAP Note about SAPSetup as of Release 6.20. Lists the SAP Notes relevant for the installation of SAP GUI for Windows.
26417	Latest information about hardware and software requirements of SAP GUI for Windows

66971	Latest information about supported front-end platforms
147519	Latest information about release and maintenance strategy of SAP GUI.
166130	Latest information about delivery and compatibility of the components delivered on the SAP NetWeaver Presentation DVD.

1.4 Information Available on SAP Service Marketplace

Installation of the SAP GUI for Windows

Latest version of this document: SAP Service Marketplace at <https://service.sap.com/instguidesNW>

Installation of the SAP GUI for Java

You find Information about the installation of SAP GUI for Java on SDN under <https://www.sdn.sap.com/irj/sdn/sap-gui> → *Installation* → *SAP GUI for Java*.

Installation of the SAP Online Documentation

You can access the SAP online documentation from the front end. The installation of the SAP online documentation is described in the document *Installing the SAP Library* on SAP Service Marketplace at <https://service.sap.com/instguidesNW> → *Other Documentation* → *SAP Library*.

SAP GUI Family

You find Information about the SAP GUI family on SDN under <https://www.sdn.sap.com/irj/sdn/sap-gui>.

Supported Platforms

Information about the platforms on which you can run SAP GUI: SAP Product Availability Matrix at <https://service.sap.com/pam> or **SAP Note 66971**

1.5 Naming Conventions

“Upgrade” means the transition from one release to another, for example, from 6.40 to 7.10.

“Update” means a change within the same release. You use a “patch” to apply the update.

2. Planning

Purpose

This section tells you how to plan the front-end installation.

Process Flow

1. You plan an [installation scenario \[page 13\]](#).
2. You meet the [hardware and software requirements \[page 15\]](#).
3. You review the [installation and maintenance flow \[page 15\]](#).

2.1 Installation Scenarios

You can install SAP GUI for Windows in the following ways:

- Workstation installation from a server

The administrator sets up an installation server, from which the installation of the SAP front-end software is run on many different clients.

All the necessary files are copied from the server to the client during installation.

- Workstation installation from a distribution medium such as a DVD

The administrator takes the distribution medium from PC to PC. This is mainly for testing or for standalone computers and is not to be used for software distribution.



We recommend you to use **workstation installation from a server** because of its greater flexibility, especially if many workstations are involved.



Server-dependent installations are no longer supported with SAP GUI 7.10.

These methods are described in more detail below.

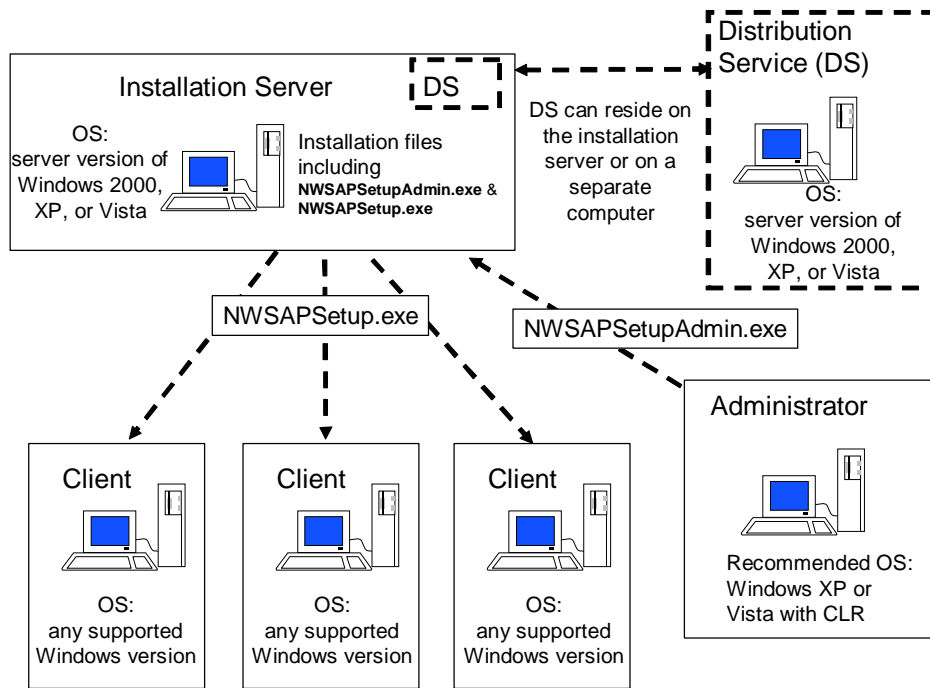
Workstation Installation from a Server

The installation process from an installation server is flexible, easy, and customizable. It makes maintenance easier in any phase of the distribution process, for example, when patches are to be applied.

You have the following options when installing SAP GUI for Windows with server-based workstation installation:

- Without user interaction (unattended)
- With user interaction (attended), where the user can:
 - Select from installation packages that the administrator configured
 - Select from the complete component list of each product available on the installation server

The following figure shows how server-based installation works:



The type of user determines which components to install and on which workstations. Different types of user have different requirements. For example, an employee in the HR department requires different products and components than a software developer.

Using an installation server, the administrator can group various components together as installation packages relevant for certain types of employee. The administrator can also specify which package particular users receive or offer a variety of packages and allow the user to choose the most appropriate one.

In addition, you can configure a distribution service to add [local security handling \[page 28\]](#) (LSH) functions to the installation server. With local security handling, the installation can be started even in the context of a user who is not a member of the local group of administrators. The distribution service then installs a service process on the client and starts `NWSAPSetup.exe` in the context of this service. The user rights and privileges are not altered. The installed service does not start other processes except `NWSAPSetup` from configured installation servers.

The hard disk requirement on the installation server depends on the type and number of products that are added to an installation server. SAP GUI for Windows requires approximately 800 MB.

As administrator, you can configure your own installation packages with `NWSAPSetupAdmin.exe` on the installation server or use the preconfigured packages provided by SAP.

You apply patches on the installation server and call `NWSAPSetup` on your client again to apply the patch on the client. You can control the installation using the command line. You can perform unattended installations with automatic patch installation on the client. To do this you place the appropriate command line in the logon script of the client. The logon script is a program that is executed when you log on.

Alternatively, you can use the SAP Automatic Workstation Update. Whenever the installation server is patched, or the packages installed are updated, this service will update the workstation(s) and reboot them if necessary. The workstation updater works in two modes - one in the presence of a logged-on user and another in his or her absence:

- When a user is logged on, the user is informed of update availability and the update happens on the user's assent. The user is also informed if a reboot is necessary and the reboot is also only executed on the user's assent.

- If no user is logged on, the update is done automatically and the reboot (if necessary) is done automatically, too.

The SAP Automatic Workstation Update is not SAP GUI-specific, it works with all components available on the installation server. For detailed information, see section 3.9 *Configuring SAP Automatic Workstation Update*.

For the update of SAP GUI, you can alternatively use the SAP Logon-based update feature. In contrast to the SAP Automatic Workstation Update described above, this method is dependent on user actions. After a certain number of double-clicks on the SAP Logon icon on the desktop, a check for updates is executed. For more information see section 4.2.3. *SAP Logon-Based Front End Update*.

Workstation Installation from a Distribution Medium

Local installation on workstations with a distribution medium such as a DVD is useful for installing SAP GUI on single machines (for example, laptops) that are not connected to a Local Area Network (LAN). You can also use it for test purposes.

This installation type has the following disadvantages:

- No installation scenarios are available.
- When patches need to be applied, you need to patch each workstation separately.

2.2 Hardware and Software Requirements

You need to make sure in advance that your system meets the following requirements:

- Front-end workstations:
 - Read **SAP Note 26417** to check that all hardware and software requirements for the front-end workstations have been met.
 - Hard-disk clones only:

If the operating systems of your client computers were generated through hard-disk cloning, make sure that the domain is set correctly. To do this, take the computers out of the domain and then put them back in. This is especially important if you intend to use [local security handling \(LSH\) \[page 28\]](#).
- The host for server-based installations must:
 - Be accessible to all users at any time, even after the installation is complete
This is required for maintenance purposes such as the distribution of patches.
 - Have broadband network connection for high throughput
 - Have 800 MB of free disk space
 - Use Windows 2000 Server or Windows 2003 Server

2.3 Installation and Maintenance Flow

Purpose

This section describes a typical installation and maintenance flow for a server-based workstation installation.

Process Flow

1. You [set up an installation server \[page 17\]](#) and, if necessary, [local security handling \[page 28\]](#) (LSH).

The installation server contains:

- Installation programs
 - Configuration information (for example, packages)
 - Service files (for local security handling)
 - Front-end components to be installed
2. You [maintain installation packages \[page 22\]](#) for different user groups.
Users can install multiple packages and packages can share components. You can configure installation parameters, such as installation directories for the components that a package contains.
 3. We recommend that you [configure local security handling \[page 28\]](#) and test it.
You can do this by logging on to a user PC with a user that does not have local administrator rights and running `NWSAPSetup.exe`.



Windows 2000, Windows XP, Windows 2003 Server, and Windows Vista have local security mechanisms. In these systems, only users with local administrator rights have write access to parts of the system database and the file system.

NWSAPSetup solves this problem with the Distribution Service (DS), which resides on the server, and the Installation Service (IS) that has been installed on the workstation. The IS starts a new instance of `NWSAPSetup.exe` that runs with sufficient privileges.

4. You [install packages using the logon script \[page 36\]](#) of your PC or using other software distribution technologies.
5. You [patch the installation server \[page 27\]](#).
6. You [upgrade the front-end \[page 39\]](#) client computers when a new front-end release becomes available.

3. Preparation

Purpose

This section tells you how to **prepare an installation server** for the front-end software installation.

Process Flow

1. You [set up an installation server \[page 17\]](#).
2. If required, you [administer your installation server \[page 19\]](#).
3. If required, you [add new SAP front-end components to an existing installation \[page 19\]](#).
4. If required, you [update products on the installation server with a newer version using a patch \[page 21\]](#).
5. If required, you [create and maintain installation packages \[page 22\]](#).
6. If required, you [patch the installation server \[page 27\]](#).
7. If required, you [configure local security handling \[page 28\]](#).



After you have set up the installation server, it is ready for use during the deployment of SAP front-end components on the workstations.

Creating packages for deployment is optional. Packages contain administrator-selected components, which are helpful to regulate and customize installation parameters such as the installation directory.

3.1 Setting Up an Installation Server

Use

You use this procedure to help distribute SAP front-end software on multiple workstations on the network.

`NWCreateInstServer` is a wizard driven tool that helps the administrator create a new installation server. After the server is set up, `NWUpdateInstServer` starts importing SAP products from the source into the newly created server.

Prerequisites

You need local administrator rights under Windows 2000, Windows XP, Windows 2003 Server, or Windows Vista.

Procedure

1. Execute the file `NwCreateInstServer.exe` from the `SETUP` folder of the CD *SAP Product Media*.
2. Choose *Next* to continue.



You can choose *Cancel* at any stage to abort the process.

`NWCreateInstServer.exe` prompts you to supply the path where you want to create the installation server.

3. Enter the folder name manually or use *Browse* to navigate to the folder where you want to create the installation server. Make sure the folder is empty.
4. Choose *Verify* to make sure that the chosen folder meets the prerequisites:
 - It must exist.
 - It must be accessible to the administrator with full access.



The folder is automatically configured. It is made NULL-session accessible. Thus, it will be automatically shared on the network for everyone to read. If you do not want this automatic configuration, use the command line parameter `DontConfigureServerPath`.

5. If required, choose *Share* to maintain the file-sharing properties of the selected folder.
6. Choose *Next* to continue.

You see a screen indicating that the server is being created.



Processing is recorded in the following file:

```
%ProgramFiles%\SAP\SAPSetup\Logs\NwCreateInstServer.log.
```

If there are errors, you see a link to an *Error Report*. Any errors are recorded in the following file, which you can view using your normal web browser:

```
%ProgramFiles%\SAP\SAPSetup\Errors\NwCreateInstServer_CurrentDateTime.xml.
```

If you have a problem, create a problem message in BC-FES-INS and attach these files to the message.

When the installation is complete, you see a screen confirming that the server has been successfully created.

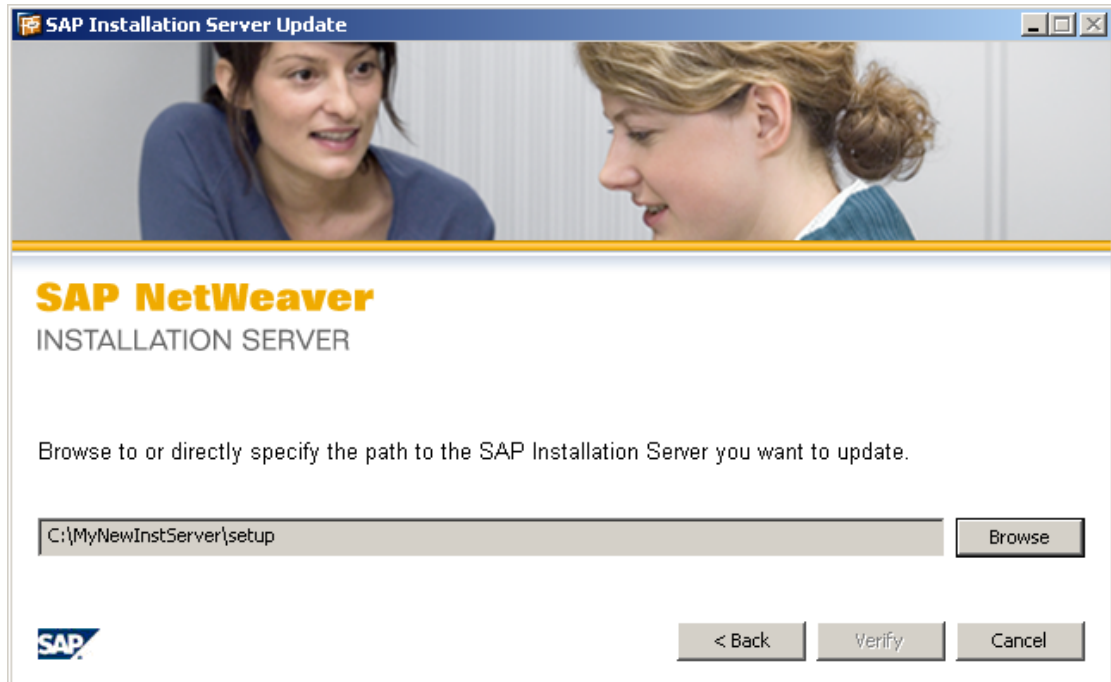
You now have a valid but empty SAPSetup installation server.

7. Choose *Next* to continue.

NWCreateInstServer.exe automatically calls NWUpdateInstServer.exe to transfer SAP products to your installation server.

8. Choose *Next* to continue.

You see the following screen:



C:\MyNewInstServer is the path where NWCreateInstServer.exe initially created a new installation server in this example.

9. Enter the folder name manually or use *Browse* to navigate to the folder of the installation server that you want to update.
10. Choose *Next* to start the server update.

You see a screen indicating that the server is being updated.



Processing is recorded in the following file:

```
%ProgramFiles%\SAP\SAPSetup\Logs\NWUpdateInstServer.log
```

If there are errors, you see a link to an *Error Report*. Errors are recorded in the following file, which you can view using your normal web browser:

```
%ProgramFiles%\SAP\SAPSetup\Errors\  
NWUpdateInstServer_CurrentDateTime.xml
```

If you have a problem, create a problem message in BC-FES-INS and attach these files to the message.

NWServerUpdate.exe transfers all SAP products available on the CD or source to the installation server.

When the update is complete, you see a screen confirming that you can use the installation server for SAP product installation on end-user workstations.

11. If you have .NET Framework version 2.0 installed, choosing *Finish* automatically starts `NWSAPSetupAdmin.exe` from the recently updated installation server.

The new NetWeaver SAPAdmin is a multi-product server administration tool.

More information: [Administering an Installation Server \[page 19\]](#)



You can replicate an installation server to an existing network share by entering the following command:

```
\\InstallationServerShare\Setup\NwCreateInstServer.exe  
/Dest=<ReplicationPath> /NoDlg
```

3.2 Administering an Installation Server

Use

After you have successfully set up the installation server, you can find `NWSAPSetupAdmin.exe` in the `SETUP` directory of the installation server.

`NWSAPSetupAdmin.exe` is designed to help you administer the multi-product installation server. It supplies the following features:

- **Import Product**
Use this feature to add new products (for example, SAP front-end components) to an existing installation server for distribution over the network.
- **Export Product**
Use this feature to export front-end components available on one installation server to another.
- **Delete Product**
Use this feature to delete a product from an installation server.
- **Create Package**
Use this feature to create packages for deployment. Packages can contain many components and their installation parameters can also be customized.
- **Create Package Definition File (PDF)**
You can create a package definition file (PDF) for an installation server package. PDF is a package description format that simplifies the interoperability and information exchange between the SAP Installer and system management products like the System Management Server from Microsoft.
- **Configure Package**
Use this feature to change the attributes or the content of your packages.
- **Patch**
Use this feature to patch components that are available on the installation server.
- **Local Security Handling**
This feature allows workstation users to install SAP components from the installation server without requiring administrative privileges.



`NWSAPSetupAdmin.exe` requires the *.NET Framework 2.0* to be installed as a prerequisite. You can download the *.NET Framework* from:

<http://www.microsoft.com/downloads/details.aspx?familyid=0856EACB-4362-4B0D-8EDD-AAB15C5E04F5>

- Configuring SAP Automatic Workstation Update

Whenever the installation server is patched, or the packages installed are updated, this service will update the workstation(s) and reboot them if necessary. The workstation updater works in two modes - one in the presence of a logged-on user and another in his or her absence:

- When a user is logged on, the user is informed of update availability and the update happens on the user's assent. The user is also informed if a reboot is necessary and the reboot is also only executed on the user's assent.
- If no user is logged on, the update is done automatically and the reboot (if necessary) is done automatically, too.

3.3 Adding New SAP Front-End Components to an Existing Installation Server

Use

This procedure tells you how to transfer new SAP front-end components on a distribution medium to your installation server. Then you can deploy them to the workstations on the network.

You can add SAP products either using `NWUpdateInstServer.exe` or `NWSAPSetupAdmin.exe` (using the import product wizard) that you can find in the `SETUP` directory of the source medium.

Prerequisites

- An existing installation server
- A medium that contains an SAP product to be added to the installation server
- Enough disk space



You must **not** use the installation server during processing.

Procedure

To update the installation server with new SAP components, use one of the following two methods:

- Using `NWUpdateInstServer.exe`
 - a. Start `NWUpdateInstServer.exe` from the `SETUP` directory of the source that contains the component to be added.
 - b. Supply the path of the installation server.
 - c. Follow the wizard to update it with components that are available on the source.
- Using `NWSAPSetupAdmin.exe`
 - a. Start `NWSAPSetupAdmin.exe` from the `SETUP` directory of the installation server that needs to be updated with the new component.
 - b. In the toolbar, choose *Import Products*.
 - c. Follow the wizard and supply the path to the source containing the product to be added to the installation server.

Example

You can update the installation server with the Adobe LiveCycle Designer 7.1 which is delivered on the same DVD as the SAP GUI for Windows. You just have to start the program <Disc Drive of DVD>:\ADOBE_LC_D71\setup\NwUpdateInstServer.exe. After being shown a welcome page, you will be asked for the path to the installation server that should be updated. Here, you must navigate to the path of the installation server which has been set up in section 3.1 (C:\MyNewInstServer\).

You just have to choose *Next* and wait until the process ends. Afterwards, the SAPSetup Installation Server Administration Tool (NwSAPSetupAdmin.exe) is displayed. On the *Products* tab, you will see the added product Adobe LiveCycle Designer.

The user can now install the product by starting the program

<Path of the installation server share>\SetupAll.exe and selecting the product to be installed, in this case the Adobe LiveCycle Designer.

3.4 Updating Products on the Installation Server with a Newer Version

Use

If newer releases of SAP products or components are required, you have to update your installation server to be able to distribute these new products to the workstations using a network.

This wizard-driven process is handled by a tool called `NWUpdateInstServer.exe` that you can find in the `SETUP` directory of your source medium.

Prerequisites

- A medium with an SAP product in a release newer than that on the installation server
- Enough disk space



You must **not** use the installation server during processing.

Procedure

1. Follow the steps as described in [Adding New SAP Front-End Components to an Existing Installation Server \[page 20\]](#).
2. Start `NWUpdateInstServer.exe` from the source medium.
3. Follow the instructions in the wizard.



You can also update products on the Installation Server by using the following command line:

```
\\UpdateSource\Setup\NwUpdateInstServer.exe  
/dest=<installation server setup directory> /NoDlg or  
/silent
```

For a description of the command line parameters see section 5.5.


3.5 Deleting Products from the Installation Server

To delete products from the installation server, proceed as follows:

1. Start `NWSAPSetupAdmin.exe` from the `SETUP` directory of the installation server where you want to delete a product.
2. On the *Products* tab, right-click the product to be deleted and choose *Delete Product*. The product deletion wizard appears.
3. Follow the deletion wizard.

At the end of the deletion process, a message will inform you, if the deletion process completed successfully.



If you delete a product that is still a part of a preselection package, the indicator  appears next to name of the affected package on the *Packages* tab. This indicates that a product that is a part of the package is not available on the installation server. Thus, either the package has to be deleted or the product must be re-imported into the server from another source.

3.6 Creating and Maintaining Installation Packages

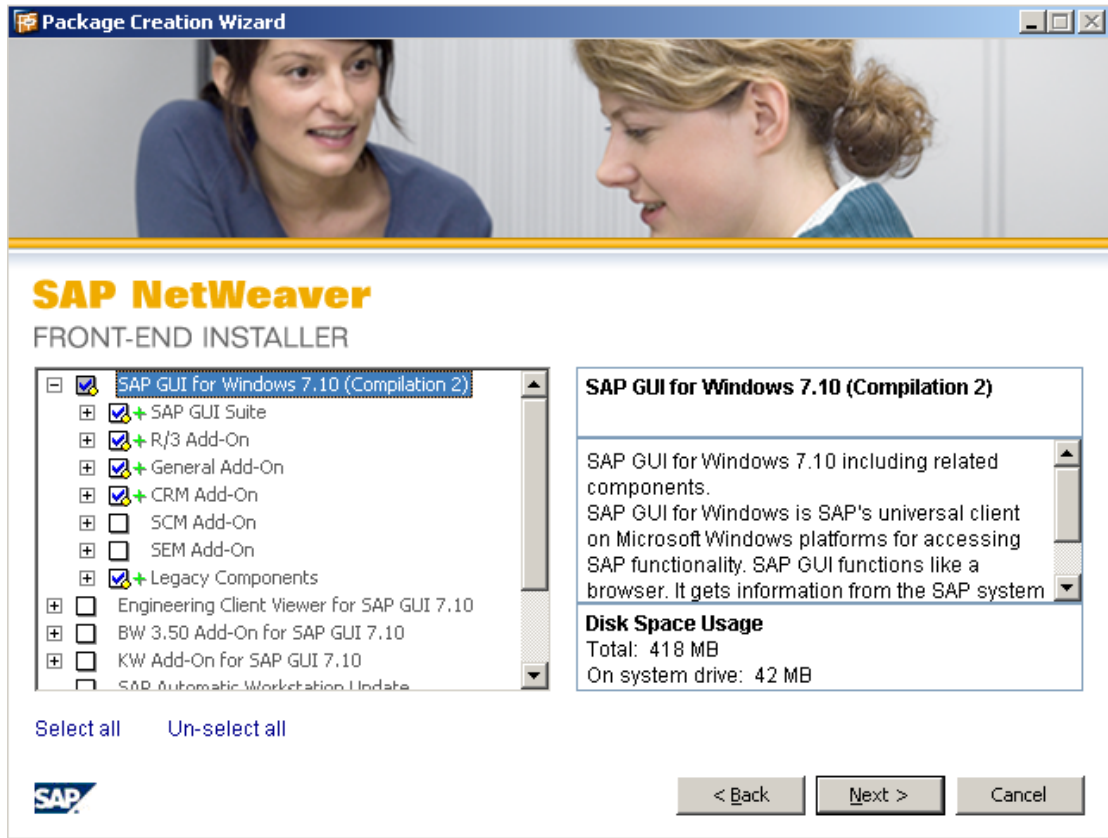
After setting up an installation server, you can create packages for an installation performed by users. The tool that you use is `NWSAPSetupAdmin.exe`, which you can find in the `SETUP` folder on the installation server.

The package creation and deployment in the new NetWeaver SAPSetup is enabled on multiple-product level, so enabling the administrator of the installation server to create packages comprising more than one SAP front-end component and parts.

3.6.1 Creating a New Installation Package

Procedure

1. Start `NWSAPSetupAdmin.exe` from the `SETUP` folder of your installation server.
2. In the toolbar, choose *New Package*.
The *Package Creation Wizard* appears.
3. To continue, choose *Next*.
The wizard displays components available on the installation server.
4. Select the products that you want to add to your package.
Yellow dots indicate changes in the selection list. The green plus signs next to the product names indicate that these products will be installed when the user installs the package on his or her workstation.



5. Choose *Next*.
You are prompted for a package name.
6. Enter a name and choose *Next*.
NWSAPSetupAdmin.exe now creates a package and confirms the successful creation.
7. To return to NWSAPSetupAdmin.exe, choose *Finish*.
The newly created package is now visible in the *Package View*.
8. Right-click a package and choose *Configure* from the context menu to customize installation parameters, such as the installation path for components contained in the package.

3.6.2 Configuring Packages and Scripting Events

Purpose

Package configuration lets the administrator change the attributes of a package (for example, the name), give the package a description and customize the installation of the package by adding scripts that are to be executed during events in the package deployment cycle.

Prerequisites


- An installation server
- Packages created by the administrator and available for customization

Process Flow

1. Start NWSAPSetupAdmin.exe from the SETUP directory of the Installation Server.

2. Switch to the *Configure Packages* tab page. In the left window pane, you can see a tree listing the existing packages.



The indicator  next to a package indicates that the package is incomplete. This typically occurs when a product that the package contains has been deleted from the installation server. You can either delete this package or re-import the missing product.

3. Select the package that you want to customize. You can for example change the name of the package, add a description, or script events.



The text supplied as description is eventually visible to the end-user wanting to install the package using `NWSAPSetup.exe`.

4. Optional: Add event-scripting to perform custom actions on the user's workstation during the installation of the package (for example, copying additional files). You can insert scripting samples delivered by SAP via *Insert Script* and adapt them to your requirements. The scripts are executed at the following events:

- On Begin Install: executed before the installation of a selected package
- On End Install: executed after the completion of package installation
- On Begin Uninstall: executed before the uninstallation of a selected package
- On End Uninstall: executed after the completion of package uninstallation
- On Begin Update: Executed before the update of a selected Package.
- On End Update: Executed after the completion of the Package update.

To learn more about the package update option see the next section [Changing the Package Content](#).

5. To save your changes, choose *Save*.

More information

Samples for package event scripting are contained in the `Installation Server Help.chm` file, which you can either find on the CD, or in the installation directory, or using the `SAPSetup Installation Server Administration Tool (NWSAPSetupAdmin.exe)` by choosing the *Help Menu* → *SAP Installation Server Help*. In this documentation, navigate through the tree structure as follows: *Administering an Installation Server* → *Maintaining Installation Packages* → *Configuring Packages and Scripting Events* → *Package Event Scripting Samples*.

3.6.3 Changing the Package Content

Purpose

The package configuration lets the administrator also update the package content. This means, you can add or remove components to be installed with the package. Also, you can add scripts that are to be executed before or after the update.


Prerequisites

- An Installation Server
- Packages created by the administrator and available for customization.

Process Flow

1. Start `NWSAPSetupAdmin.exe` from the `SETUP` directory of the Installation Server.
2. Switch to the *Configure Packages* tab. In the left window pane, you can see a tree listing the existing packages.



The indicator  next to a package indicates that the package is incomplete. This typically occurs when a product that the package contains has been deleted from the installation server. You can either delete this package or re-import the missing product.

3. Select the package for which you want to update the content, and choose *Change Package Content*.
You can now select or deselect components. Components added will be newly installed on the workstations. Those removed will be uninstalled from the workstations, if they are not part of any other package marked for installation. When updating a package, the package installation parameters are also refreshed and include new variables or delete those that belong to components that are no longer part of this package.
4. Optional: Add event-scripting to perform custom actions on the user's workstation during the update of the package. You can insert scripting samples delivered by SAP via *Insert Script* and adapt them to your requirements. The scripts will be executed before and after the update:
 - a. On Begin Update: Executed before the update of a selected Package.
 - b. On End Update: Executed after the completion of the Package update.
5. Remember to click the *Save* button to persist changes made.
Saving the package increases the version number and the package is marked for update on the workstation. When the package installation is updated on the workstation, the package components that have been newly added or removed by the administrator are automatically installed or uninstalled respectively.



If you are using package event-scripting to transfer your files, the *Mark for Update* link as seen on the *Configure Packages* tab can be used to inform the installer of the availability of an update after you have modified this file. The installer will now recognize the package as updated and the modifications will be transferred to the workstations at update time via the `OnBeginUpdate` and `/or OnEndUpdate` scripts.

Also read: [Package Event Scripting Samples](#)

3.6.4 Deleting an Installation Package

Procedure

1. Switch to *Package* view.
2. Right-click the package you want to delete.
3. From the context menu, choose *Delete Package*.

The package is deleted. It is removed from the *Package* view.

3.6.5 Creating a Package Definition File

Use

You can create a package definition file (PDF) for an installation server package. PDF is a package description format that simplifies the interoperability and information exchange between the SAP Installer and system management products like the System Management Server from Microsoft.

Procedure

Proceed as follows to create a package definition file:

1. If not already started, start `NWSAPSetupAdmin.exe` from the `SETUP` directory of the installation server.
2. On the *Packages* tab, right-click the package for which you want to create a PDF file and choose *Create Package Definition File*.
3. Choose the directory where you want to save the file, enter a file name, and choose *Save*.

Result

`NWSAPSetupAdmin.exe` creates a PDF and an SMS file in the specified directory.

3.6.6 Creating and Deploying Self-Installing Packages

Use

You can create single-file self-installing `.exe`-packages via `NWSAPSetupAdmin.exe`.

Such a package contains only those files that belong to the components that are a part of the package. Thus, it reduces your network load in certain distribution scenarios where you previously had to make local copies of your installation source before installing.

This single-file self-installer can also install silently without user interaction.

Prerequisites

- You have created a SAP installation server using `NWCreateInstServer.exe` available with your SAP GUI CD, or inside the `SETUP` folder of any other SAP software installed using SAP Installer.
- You have created a package or packages that contain the desired components.

Procedures

Proceed as follows to create or deploy a self-installing package:

Creating a self-installing package

1. Start `NWSAPSetupAdmin.exe` (you will need `.NET 2.0` to use this version).
2. In the *Packages* tree, right-click the package you want to create a self-installing file from, and choose *Compress Package To Self Extractor*.
3. Following the wizard instructions, you will get a single `exe`-self-extractor at the end of the process.
4. Close `NWSAPSetupAdmin.exe`.

Deploying a self-installing package

1. The self-installing file created above can be executed on any workstation to install your package.
2. Follow the installation wizard.

This self-installing package can be installed silently (i.e. without user-interaction) when invoked with the command-line parameter `/silent`.

Result

You have created and deployed a self-installing package.

Troubleshooting

If you face problems with creating a self-installing package, check first that your server has no missing files - via the *Check Server* feature in the NWSAPSetup administration tool (`NwSapSetupAdmin.exe`).

If you encounter problems with installing the self-installing package, use the Check-Workstation tool (`NwCheckWorkstation.exe`).

3.7 Patching the Installation Server

Use

Patching products on the installation server keeps them up-to-date with the most recent correction and enhancements from SAP.

You can configure the SAP Automatic Workstation Update. This service will update the workstation(s) and reboot them if necessary whenever the installation server is patched, or the packages installed are updated. The workstation updater works in two modes - one in the presence of a logged-on user and another in his or her absence. For detailed information, see section 3.9 *Configuring SAP Automatic Workstation Update*.

For the update of SAP GUI, you could also use the SAP Logon-based update feature. In contrast to the SAP Automatic Workstation Update described above, this method is dependent on user actions. After a certain number of double-clicks on the SAP Logon icon on the desktop, a check for updates is executed. For more information see section 4.2.3. *SAP Logon-Based Front End Update*.

Prerequisites

- An existing installation server



To ensure a successful patch and to avoid having to reboot after the patch, you can unshare the installation server during the patch and recreate it when the patch has finished.

- A patch supplied by SAP for products or components available on the installation server.

Procedure

1. Start `NWSAPSetupAdmin.exe` from the `SETUP` directory of the installation server.
2. Choose *Patch Server*.
This starts the patch wizard.
3. Choose *Next* to continue.
4. Browse to a valid SAP patch file and choose *Next* to continue.

`NWSAPSetupAdmin.exe` now validates the patch, which takes a few minutes.

If the patch is valid, you are prompted to proceed with it.



To ensure that the installation server is not in use, the patch now closes `NWSAPSetupAdmin.exe` before continuing. It restarts `NWSAPSetupAdmin.exe` after completing the patch.

5. Choose *Next* to continue.

`NWUpdateInstServer.exe` starts patching the installation server.

6. Follow the patch wizard, choosing *Next* as required.



Processing is recorded in the following file:

```
%ProgramFiles%\SAP\SapSetup\Logs\NWUpdateInstServer.log.
```

If there are errors, you see a link to an *Error Report*. Any errors are recorded in the following file, which you can view using your normal web browser:

```
%ProgramFiles%\SAP\SapSetup\Errors\
NWUpdateInstServerErrors_<CurrentDateTime>.xml.
```

If you have a problem, create a problem message in BC-FES-INS and attach these files to the message.

At the end of the process, you see a message indicating that the patch was successful.

7. Choose *Finish*.

`NWSAPSetupAdmin.exe` now restarts.

If you have patched a SAP front-end component (for example, SAP GUI for Windows 7.10), the version number of this component in `NWSAPSetupAdmin.exe` increases after applying the patch.

3.8 Configuring Local Security Handling

Use

Local security handling (LSH) lets users on the network deploy SAP front-end components on their front ends using NetWeaver SAPSetup without requiring administrative privileges on each front end.

Prerequisites

- You have [set up an installation server \[page 17\]](#).
- To enable front ends running Windows Vista to use LSH, you need to change the default firewall setting to enable remote service management as follows:
 - a. Open the control panel and choose *Windows Firewall* → *Change Settings*.
 - b. On tab page *Exceptions*, select *Remote Service Management* and choose *OK*.

Procedure

1. Start `NWSAPSetupAdmin.exe` from the `SETUP` folder of the installation server.
2. Choose *Services* and select *Configure local security handling*.
The LSH configuration wizard starts.
3. Choose *Next*.
The wizard prompts you for the credentials of an account that has administrative privileges for all front ends on the network.
4. Enter the account name with domain qualifiers.

5. Choose *Verify*.
Verification only confirms that the password supplied matches its repetition. Verification does **not** validate credentials.
6. Choose *Next*.
7. Enter details for the installation service (IS) account, verify, and choose *Next* to complete the process.
The wizard displays the success state in starting the distribution service and the status bar at the bottom of `NWSAPSetupAdmin.exe` displays the service state as *Active*.
8. Test the functioning of the LSH feature by starting `NWSAPSetup.exe` from this installation server on a front end where the logged-on user has ordinary user privileges (that is, the user does not have administrative privileges).

Result

If the front-end installer starts successfully and is able to install components available on the installation server, the configuration is successful.

If not, you need to reconfigure LSH.

3.9 Configuring SAP Automatic Workstation Update

Use

The SAP Automatic Workstation Update is a new installer feature shipped with compilation 2. It works only when installed on the workstation. Whenever the installation server is patched, or the packages installed are updated, this service will update the workstation(s) and reboot them if necessary. The workstation updater works in two modes - one in the presence of a logged-on user and another in his or her absence:

- When a user is logged on, the user is informed of update availability and the update happens on the user's assent. The user is also informed if a reboot is necessary and the reboot is also only executed on the user's assent.
- If no user is logged on, the update is done automatically and the reboot (if necessary) is done automatically, too.



This service updates itself, when a patch of automatic workstation update is available.

Prerequisites

The workstation side needs a network connection to the installation source for any update to be possible.

On the installation server side, the following prerequisites must be met:

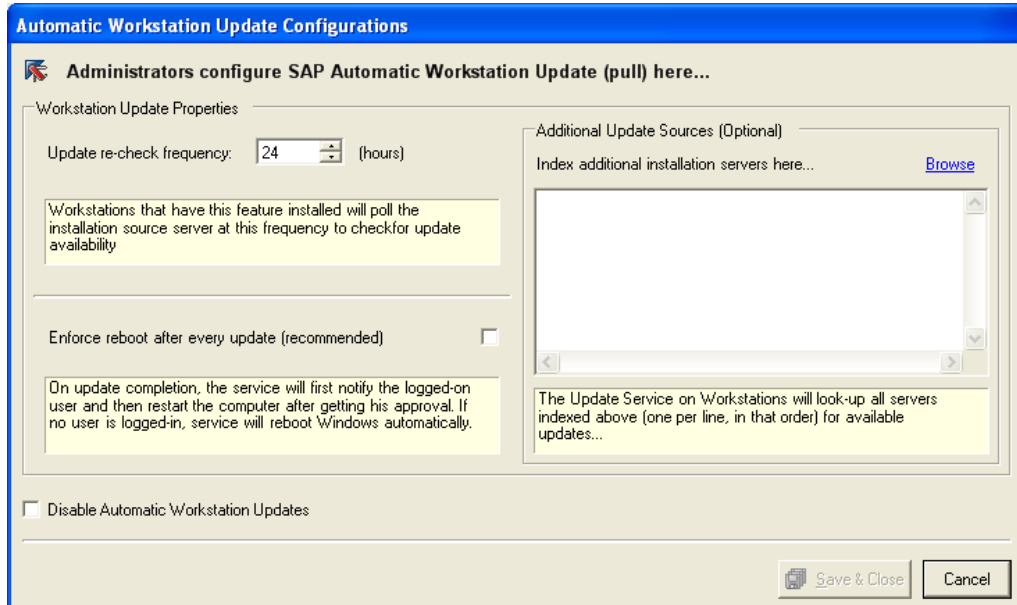
1. The installation server should be hosted on a machine that can work as a file-server and serve numerous network sessions.
2. Windows Server 2003 (or equivalent) is recommended as the installation server operating system with the following 'Local Security Policy':
 - "Accounts: Guest account status" – Enabled.
 - "Network Access: Let Everyone permissions apply to anonymous users" - Enabled.
3. The installation server should be created (and hence configured) using `NWCreateInstServer.exe`.

Procedure

In order to configure automatic workstation update, proceed as follows:

1. Open the administration tool `NWSapSetupAdmin.exe`.
2. Choose *Services -> Configure automatic update*.

The screen *Automatic Workstation Update Configurations* appears as shown in the following picture:



You have now several options:

- a. Update re-check frequency

The workstations that will have this feature installed, will poll the installation server at this interval to check for update availability. The default is 24 hours.
- b. Enforce reboot after every update

When this flag is not set, the user is asked to reboot only if it is required to complete the deployment process. When the flag is set, a reboot is enforced, which means that the user is always asked to reboot.
- c. Additional Update Sources (optional)

You can index additional servers. The update service will then look up the indexed servers per line in the given order for available updates.

3. Save your entries and close the program.

To make the automatic workstation update service available on workstations, you should create a package using `NWSapSetupAdmin.exe` on the installation server. This package should consist of `SAPGUI` for Windows and `SAP Automatic Workstation Update`. Once automatic workstation update is installed, then the following programs will run on the workstation in the background:

`NWSAPSetupUserNotificationTool.exe` and
`NWSAPAutoWorkstationUpdateService.exe`.



The front-end side will query the last 10 installation sources that are network paths.

Result

You have configured the SAP Automatic Workstation Update and made it available on the workstations.

To disable the service, activate the option *Disable Automatic Workstation Update* in the configuration tool on the installation server (see picture above). This action is propagated as an update to the workstations.



Once disabled, this action cannot be undone until the Automatic Workstation Update Service is reinstalled.

4. Installation Process

Purpose

This section provides information about the steps that you have to perform to install your SAP front end.

Prerequisites

You have completed [planning \[page 12\]](#) and [preparation \[page 16\]](#) before you start the installation.



In the event of errors, consult the [log files \[page 43\]](#) before creating a problem message.

If required, create a problem message in BC-FES-INS and attach these files to the message.

Process Flow

1. You [perform the installation \[page 31\]](#).
2. You [perform the required software updates \[page 39\]](#).

4.1 Installation of the SAP Front End

Purpose

This section describes how you install the SAP front-end software.

Process Flow

You install components on your front end centrally [from an installation server \[page 31\]](#) or locally [from a distribution medium \[page 36\]](#) such as DVD.

4.1.1 Installing Components from an Installation Server

Use

This procedure tells you how to install **components** from an installation server.

More information on how to install **packages** from an installation server:

- [Installing Packages Configured by the Administrator \[page 34\]](#)
- [Installing Packages Using the Logon Script \[page 36\]](#)

Prerequisites

- You have already [set up an installation server \[page 17\]](#).

- The user logged on to the front end (Windows 2000, Windows XP, or Windows Vista) must have local administrative privileges.
- If the user does **not** have local administrative privileges, make sure that [local security handling is correctly configured \[page 28\]](#) on the installation server.

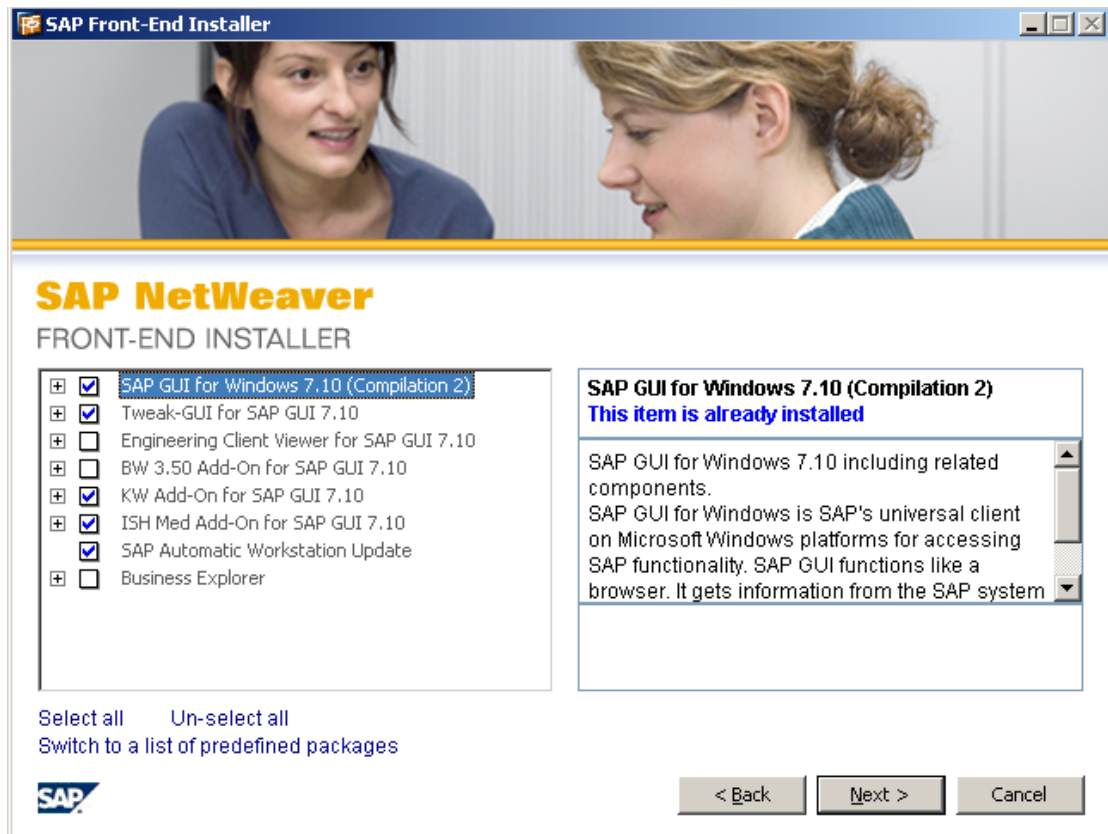
Procedure

1. Start NWSAPSetup.exe from the SETUP folder on the installation server.

The SAPSetup installation wizard appears.

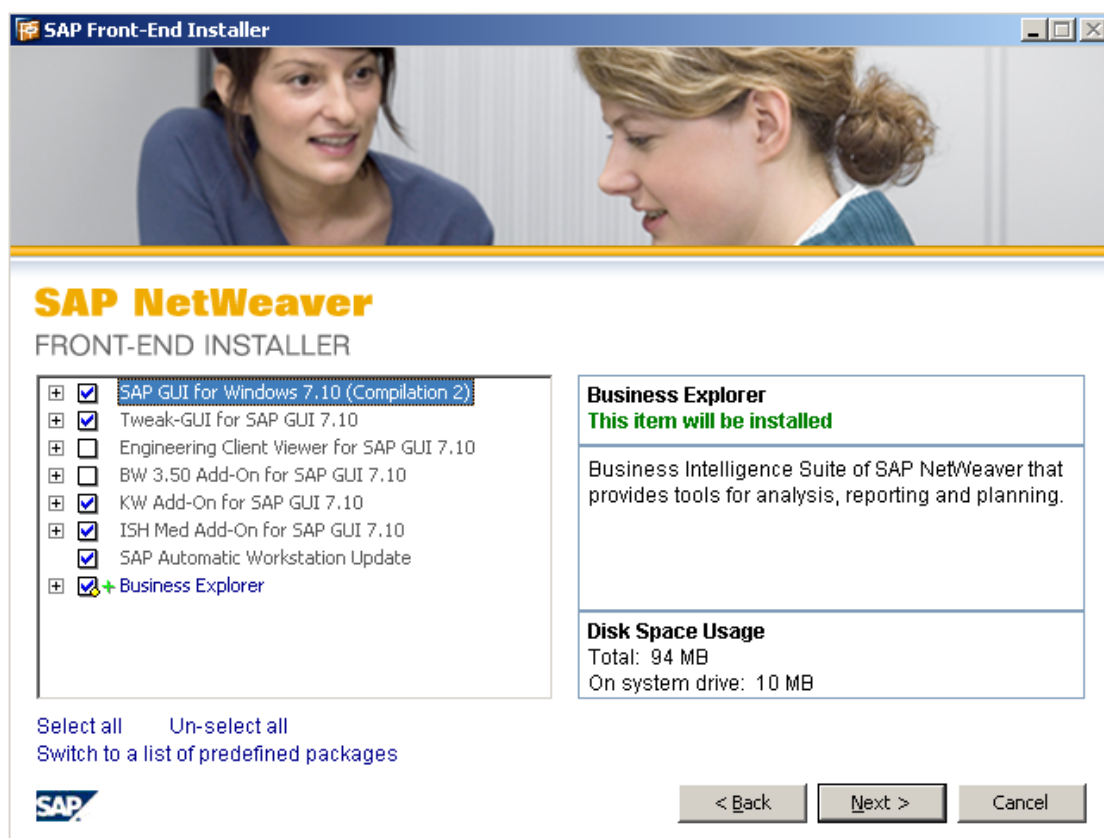
2. Choose *Next*.

The product list is displayed. Products that have already been installed are pre-selected as shown in the following picture:

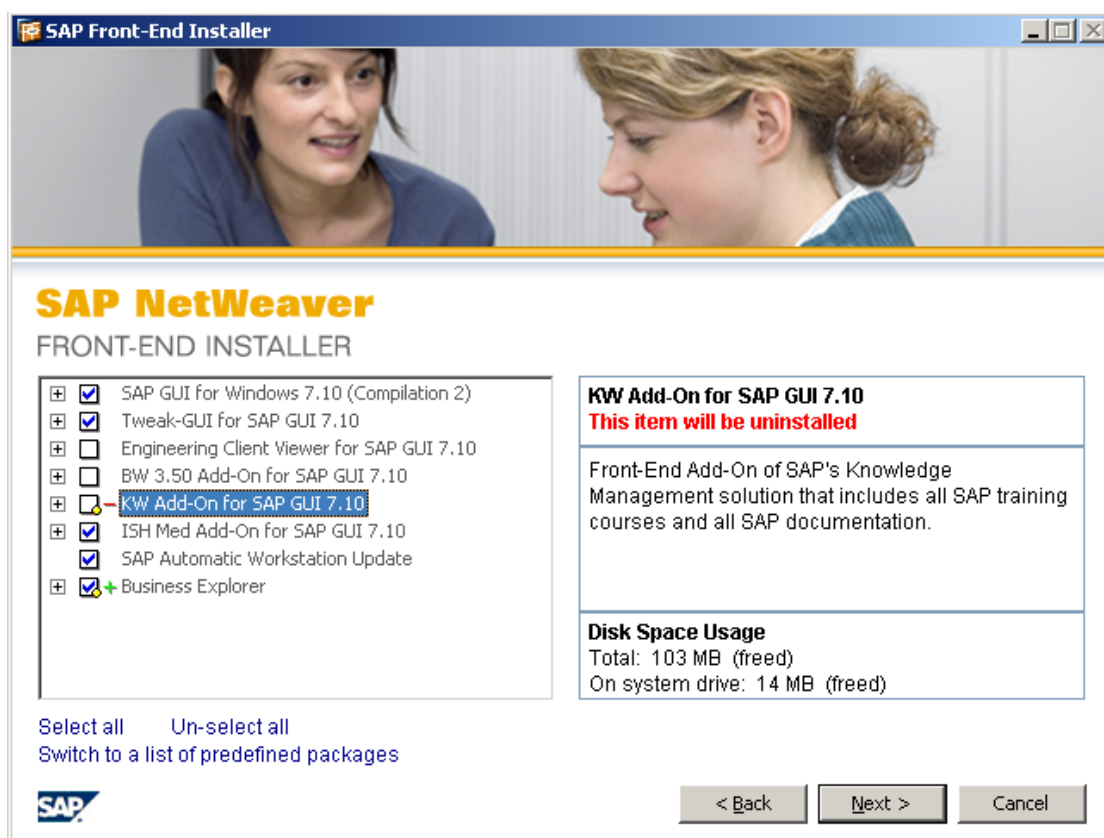


3. Select the products or SAP front-end components that you want to install or deselect the ones you want to remove.

Yellow dots indicate changes in the selection list. The green plus next to a product name indicates that this product will be installed when the user installs the package on his or her workstation.



If you deselect a product in this list that has already been installed, a red minus appears to indicate that this product is marked for uninstallation.



4. After (de)selection, choose *Next*.

The installation wizard might prompt you to enter or change information to customize the installation of the selected products, such as the installation folder.



The default path for installing SAP GUI for Windows 7.10 is C:\Program Files\SAP\FrontEnd, but you can change this if required.

5. If necessary, change this information and choose *Next* to start the installation.

The installation starts and a progress screen appears.



Processing is recorded in the following file:

```
% ProgramFiles%\SAP\SAPetup\Logs\NWSAPSetup.log
```

If there are errors, you see a link to an *Error Report*. Errors are recorded in the following file, which you can view using your normal web browser:

```
%ProgramFiles%\SAP\SAPSetup\Errors\SAPSetupErrors_<DateTime>.xml
```

If you have a problem, create a problem message in BC-FES-INS and attach these files to the message.

When the update is complete, you see a confirmation screen. Your SAP front-end component is now successfully configured and ready to use.

4.1.1.1 Installing Packages Configured by the Administrator

Use

This procedure lets you install or remove packages on your front end that have been configured by the administrator on the installation server.



Be careful when removing packages. Make sure you do not mistakenly remove shared components that are used by other packages you want to keep.

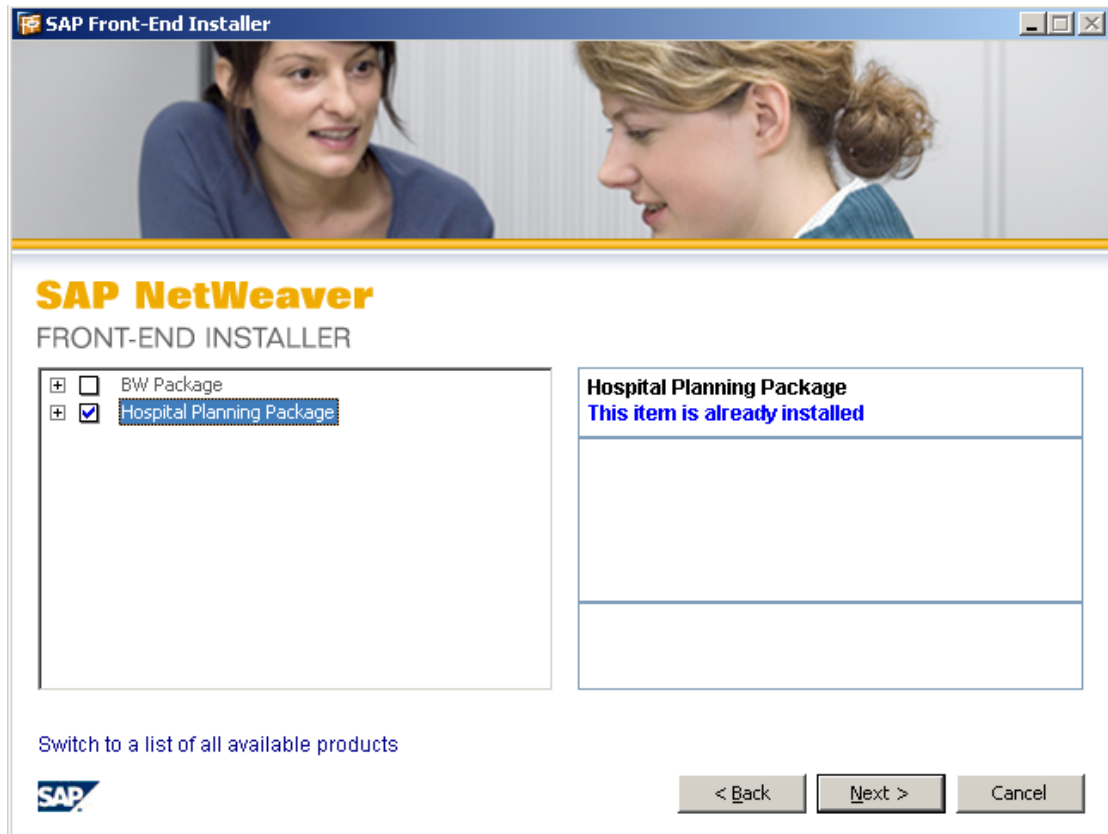
Prerequisites

- You have already [set up an installation server \[page 17\]](#).
- The user logged on to the front end (Windows 2000, Windows XP, or Windows Vista) must have local administrative privileges.
- If the user does **not** have local administrative privileges, make sure that [local security handling is correctly configured \[page 28\]](#) on the installation server.
- The administrator has created packages using NWSAPSetupAdmin for deployment on the front end.

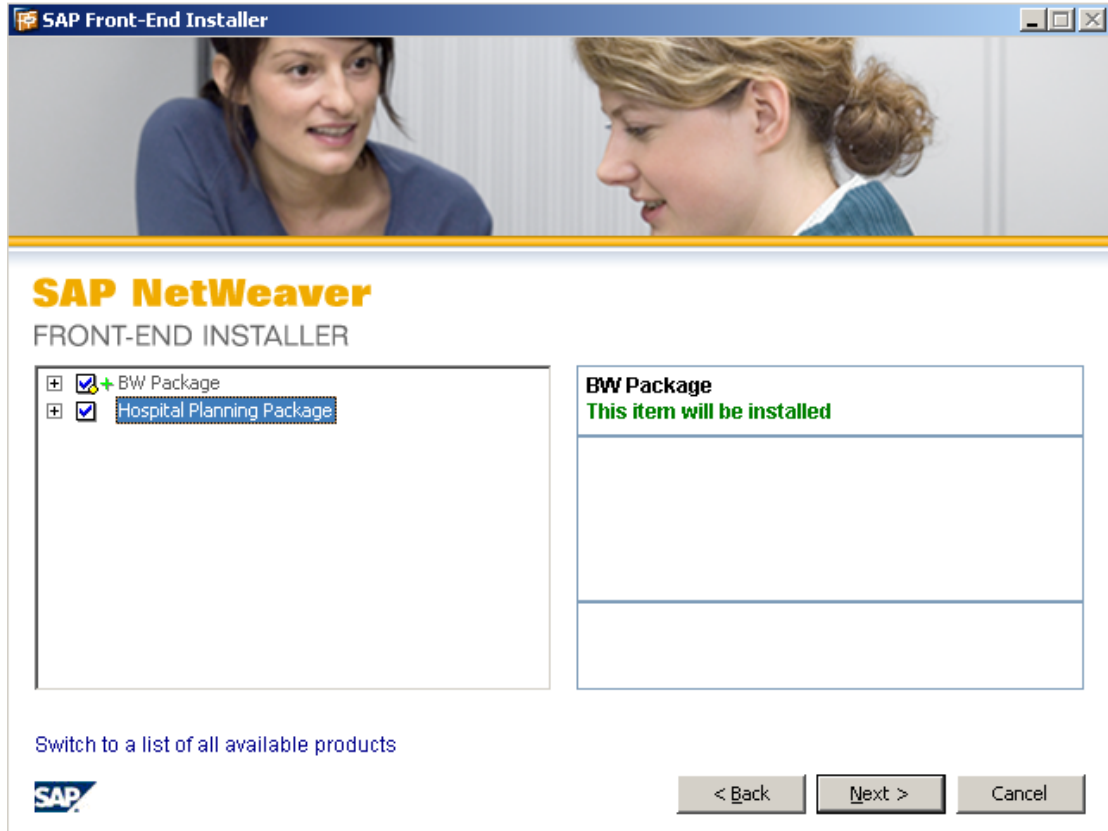
Procedure

1. Start NWSAPSetup.exe /package from the SETUP folder of the installation server or distribution medium.

A list of the packages that the user is authorized to install or uninstall is displayed. Packages that have already been installed are pre-selected. In the following case, the package Hospital Planning Package is already installed on the workstation.



2. Select the components or packages that you want to install or deselect the ones you want to remove.



In this case, the BW Package has been selected for installation. The yellow dot indicates a change in the selection list. The green plus next to the product name

indicates that this object will be installed when the user installs the package on his or her workstation. If you deselected a package, you would see a red minus next to the object selected for de-installation.

3. After (de)selection, choose *Next*.

SAPSetup now processes the packages and displays the completion status when finished.



If errors occur during the installation, SAPSetup displays a link to a document in which the errors have been logged. Contact the administrator of the installation server or the network and pass on the information given in this document.

4.1.1.2 Installing Packages Using the Logon Script

Use

Since the front-end software is normally installed on a large number of computers, NWSAPSetup lets you automate this task.

By inserting a command line into the logon scripts of the computers on which the front-end software is to be installed, you can start a package installation each time the user logs on.

Prerequisites

Make sure that the front-end software (especially SAPGUI) is not running when you perform the procedure below because program files in use might cause a reboot.

Procedure

Enter the following command (both the path and either the package name or unique package identifier must be used):

```
\\<server>\<shared folder>\setup\NWSAPSetup.exe /package:"<package command-line name>" /silent
```



You can also call `NWSAPSetupAdmin.exe` in the same way to perform this task.

When you start this command for the first time on a computer, NWSAPSetup installs the specified package.

For a list of options, see [Command Line Parameters \[page 44\]](#).

4.1.2 Installing Components Locally from a Distribution Medium

Use

This procedure installs SAP front-end software components on a single computer from a distribution medium such as a DVD.

Prerequisites

The user logged on to the front end (Windows 2000, Windows XP, or Windows Vista) must have local administrative privileges.

Procedure

1. In folder `Gui\Windows\Win32\SETUP` on the *SAP NetWeaver Presentation DVD*, start `SAPGUISetup.exe`.

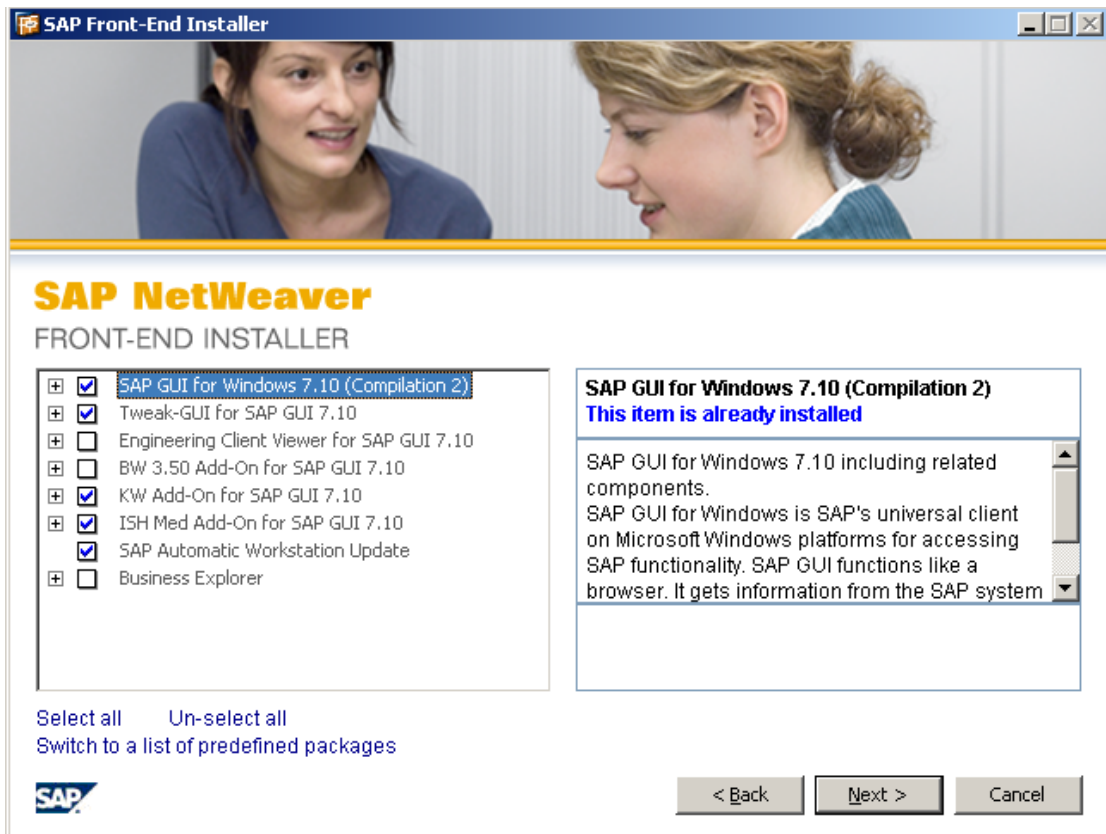
The SAPSetup installation wizard appears, showing you a list of components that are part of the product SAP GUI for Windows 7.10.



To view and optionally install **all** products – that is, SAP front-end components available on the installation medium including SAP GUI and others (the *SAP NetWeaver Presentation DVD* contains SAP GUI for Windows and SAP BI front end as well as other components that can be integrated on an individual basis) – use `SetUpAll.exe`.

2. Choose *Next*.

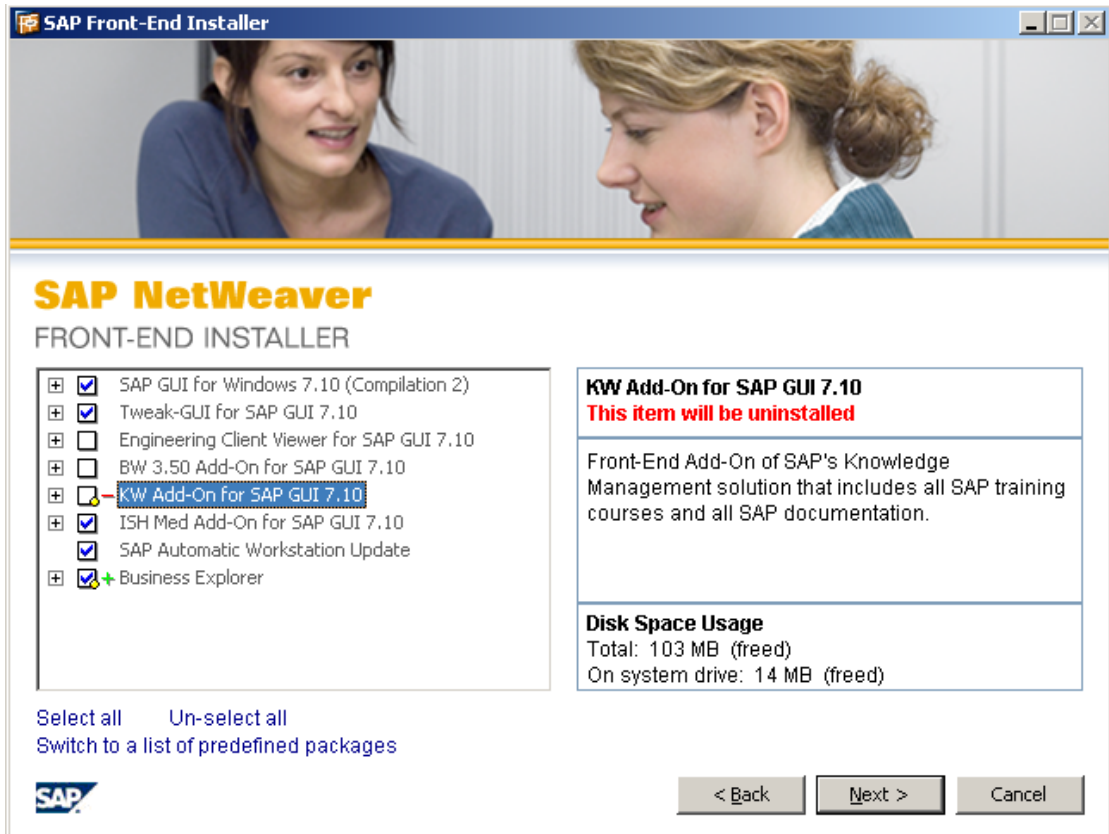
A list with (de)selectable products is displayed:



Products that have already been installed are pre-selected.

3. Select the products or SAP front-end components that you want to install or deselect the ones you want to remove.

Changes in the selection list are indicated by a yellow dot. If you select a product for installation, you will see a green plus next to the product to install. If you select a product for de-installation, a red minus appears as shown in the following picture:



4. Choose *Next*.

The installation wizard might prompt you to enter or change information to customize the installation of the selected products, such as the installation folder.



The default path for installing SAP GUI for Windows 7.10 is C:\Program Files\SAP\FrontEnd, but you can change this if required.

5. If necessary, change this information and choose *Next* to start the installation.

The installation starts and you see a progress screen.



Processing is recorded in the following file:

```
% ProgramFiles%\SAP\SAPetup\Logs\NWSAPSetup.log
```

If there are errors, you see a link to an *Error Report*. Errors are recorded in the following file, which you can view using your normal web browser:

```
%ProgramFiles%\SAP\SAPSetup\Errors\SAPSetupErrors_<DateTime>.xml
```

If you have a problem, create a problem message in BC-FES-INS and attach these files to the message.

When the update is complete, you see a confirmation screen. Your SAP front-end component is now successfully configured and ready to use.

4.2 Update of the SAP Front End

Purpose

This section describes how you update the installed front ends when a newer version is available as a patch either on the installation server or on a distribution medium (such as a DVD).



Patches for SAP GUI for Windows do **not** contain the complete set of files required for SAP GUI for Windows. Therefore, you cannot upgrade to a new release by just applying a patch for the new release to your existing installation.

Instead you have to start the installation of the new release using the SAP GUI version delivered on the *SAP NetWeaver Presentation DVD*. Afterwards you can use patches to update the new SAP GUI for Windows release.

Process Flow

You can update the SAP front end in one of the following ways:

[Updating the Front End from an Installation Server \[page 39\]](#)

[Patching a Standalone Front End \[page 39\]](#)

[SAP Logon-Based Update of the Front End \[page 40\]](#)

4.2.1 Updating the Front End from an Installation Server

Use

You can update the front end from an installation server.

Procedure

Updating the front end basically involves the same steps as an installation, see section [Installation of the SAP Front End from an Installation Server \[page 31\]](#).

You have the possibility to have the update run unattendedly, automatically, or SAP Logon-based:

- For unattended update, use the following command line:
`\\<server_path>\setup\NWSAPSETUP.exe /UPDATE /silent`



To update a specific package or product, add:

```
/package="package command-line name"
```

Or

```
/product="product command-line name"
```

You will find the command-line name of the package or product in the administrative console `NWSAPSetupAdmin.exe`.

- For automatic update, you can use the SAP Automatic Workstation Update. Whenever the installation server is patched, or the packages installed are updated, this service will update the workstation(s) and reboot them if necessary. The workstation updater works in two modes - one in the presence of a logged-on user and another in his or her absence
 - When a user is logged on, the user is informed of update availability and the update happens on the user's assent. The user is also informed if a reboot is necessary and the reboot is also only executed on the user's assent.

- If no user is logged on, the update is done automatically and the reboot (if necessary) is done automatically, too.

The SAP Automatic Workstation Update is not SAP GUI-specific, it works with all components available on the installation server. For details, see section 3.9 *Configuring SAP Automatic Workstation Update*.

- For the update of SAP GUI, you can alternatively use the SAP Logon-based update feature. In contrast to the SAP Automatic Workstation Update described above, this method is dependent on user actions. After a certain number of double-clicks on the SAP Logon icon on the desktop, a check for updates is executed.

For details, see section 4.2.3. *SAP Logon-Based Front End Update*.

Result

Depending on the chosen update method, the front end is updated with or without user interaction. In case of a user-interactive update, the user just has to choose *Next* to start the front-end update.

4.2.2 Patching a Standalone Front End

You can update a standalone front end by running a patch on it. Updating involves the same steps as an installation.

More information: [Installation of the SAP Front End \[page 31\]](#)



We recommend [updating with an installation server \[page 39\]](#) instead of updating individual front ends by running a patch.

4.2.3 SAP Logon-Based Update of the Front End

Use

If SAP GUI 7.10 or any other SAP front-end software is installed from an installation server, each front-end user has the option to enable an update check.

With SAP GUI for Windows, this works as follows: Each time a user double-clicks the SAP Logon (or SAP Logon Pad) icon, the update mechanism checks the installation server for the availability of a better version of `saplogon.exe`. If an update is found, a user-interactive update is started from the update-source following which SAP Logon is started

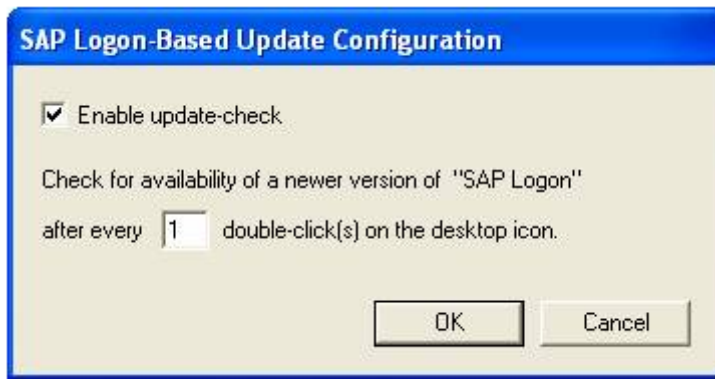


Note that with SAP GUI 7.10 Compilation 2 there is a new update feature available called SAP Automatic Workstation Update (see chapter 3.9 *Configuring SAP Automatic Workstation Update*). This is a generic mechanism that can also be used to automate the update of admin-created packages.

Procedure

1. Right-click the SAP Logon or SAP Logon pad icon on the front-end desktop and choose *Configure Update-Check*.

The following dialog box appears:



By default, the update-check is:

- Switched on if the installation of SAP GUI for Windows 7.10 was run from an installation server.
 - Switched off if the installation of SAP GUI for Windows 7.10 was run from a distribution medium.
2. To activate your selection, choose *OK*.

The number in the availability check field specifies the number of times that an application is executed before the availability of an update is checked.



Upgrading from Release 6.20 or 6.40 to Release 7.10

The installation software upgrades the existing SAP GUI for Windows 6.20 or 6.40 to SAP GUI for Windows 7.10. It first uninstalls any old releases of SAP GUI for Windows.

Components that are not part of SAP GUI for Windows 7.10, but that were part of earlier releases of SAP GUI for Windows – such as SAP Console, SAP MAPI, and SAPForms – are removed during this process and are not reinstalled.

More information, if you prefer a completely new installation: [Uninstalling the SAP Front End](#)

5. Additional Information

The following sections are **optional** and provide important additional information:

- [Removing an Installation Server \[page 42\]](#)
- [Uninstalling the SAP Front End \[page 42\]](#)
- [FAQs \[page 42\]](#)
- [Viewing Log and Error Files \[page 43\]](#)
- [Command-Line Parameters \[page 44\]](#)
- [Component List \[page 46\]](#)

5.1 Removing an Installation Server

Use

You can remove an installation server if it is no longer needed.

Procedure

1. If [local security handling \[page 28\]](#) is configured, start `NWSAPSetupAdmin.exe` and stop it using the *Services* menu.
2. First unshare the folder so that the installation server is not available to front ends on the network.
3. Delete the folder from the file system using the Windows explorer.

5.2 Uninstalling the SAP Front End

Prerequisites

Make sure that SAP GUI for Windows 7.10 applications are not running at uninstall time. If an application is running during the uninstallation, the user is prompted to reboot afterwards.

Procedure

1. Choose *Start* → *Settings* → *Control Panel* → *Add or Remove Programs*.
A list of the installed applications appears.
2. Select *SAP GUI 7.10*.
3. Choose *Remove*.
4. Choose *Next*.

Result

SAP GUI for Windows 7.10 is uninstalled and a log file is generated.



To perform silent, unattended uninstallation, enter the following commands:

```
NWSAPSetup.exe /Product="<product name>" /silent /Uninstall  
for uninstalling a certain product, for example SAPGUI710
```

```
NWSAPSetup.exe /all /silent /Uninstall  
for uninstalling all SAP components installed by SAPSetup without having to call  
specific command-lines for specific products
```

You find more information on this in section 5.5 *Command Line Parameters*.

5.3 FAQs

You can find FAQs for the server and the client part of NetWeaver SAP Setup either from the CD, from the installation directory, or in the system documentation of the NetWeaver SAPSetup Server Installation Administration Tool (`NWSAPSetup.exe`) choosing *Help* → *SAP Installation Server Help*.

The FAQs for the server can be found under *SAP Installation Server Help -> Troubleshooting and FAQs*.

The FAQs for the client can be found under *SAP Front-End Installer Help -> Troubleshooting and FAQs*.

5.4 Diagnosing Front-End Software Installations using NWCheckWorkstation

To diagnose a workstation containing installed SAP components, start `NWCheckWorkstation.exe` from either the `SETUP` directory of the Installation Server or from the `SETUP` directory of the workstation (`%PROGRAMFILES%\SAP\SAPSetup\Setup`), and follow the wizard. You will be presented with a report on completion of the check process.

`NWCheckWorkstation` verifies the installation of SAP front-end components by checking for discrepancies in files, services, registry-keys, and other artifacts deployed using `NWSAPSetup`.

The workstation check tool will collect critical installation files and compress them into a cabinet archive. This `CAB`-File will be presented to the user after the completion of the process, and can be supplied to SAP support staff when reporting installation issues - for quicker diagnosis.

5.5 Viewing Log and Error Files

Log Files

All the installation tools described in this document maintain an activity record in log files that you can find here:

```
%ProgramFiles%\SAP\SAPSetup\Logs
```

Each tool stores the last ten log files.

Error Files

Errors are stored in an XML format in files that you can view in any browser and you can find in the following folder:

```
%ProgramFiles%\SAP\SAPSetup\Errors
```

If you have a problem, create a problem message in BC-FES-INS and attach the relevant log files to the message.

Log and Error Files for Each Tool



Tool	Log File	Error File
<code>NWCreateInstServer.exe</code>	<code>NWCreateInstServer.log</code>	<code>NwCreateInstServerErrors_<DateTime>.xml</code>
<code>NWUpdateInstServer.exe</code>	<code>NWUpdateInstServer.log</code>	<code>NwUpdateInstServerErrors_<DateTime>.xml</code>
<code>NWSAPSetupAdmin.exe</code>	<code>NwSAPSetupAdmin.log</code>	<code>NWSAPSetupAdminErrors_<DateTime>.xml</code>
<code>NWSAPSetup.exe</code>	<code>NWSAPSetup.log</code>	<code>SAPSetupErrors_<DateTime>.xml</code>

5.6 Command-Line Parameters

In this section, you find two tables with command line parameters:

- for installation server creation and update
- for frontend installation and update

Installation Server Creation and Update Command Line Parameters


NWCreateInstServer/ NWUpateInstServer Parameter	Description
/Dest	Use this parameter to supply the destination folder where you wish to create your installation server. Sample: /Dest="C:\MyInstServerPath"
/noDlg	Shows only the progress dialog Displays no other user interface. You can use it instead of /silent, if you wish to see progress.  If using /noDlg, you need to supply the destination server path via /Dest.
/silent	Displays no user interface – not even progress  If using /silent, you need to supply the destination server path via /Dest.
/DontConfigureServerPath	Disables the automatic installation source folder configuration (network share creation and null-session accessibility).






You can use command-line parameters to automatically replicate your (master) installation server across multiple locations.

Front-End Installation and Update Command Line Parameters

You can call `NWSAPSetup.exe` with the command-line parameters listed below.

NWSAPSetup Parameter	Description
/package:["<package command-line name>"] [/silent] [/uninstall] [/update]	Displays the wizard that lets you choose packages  You cannot switch to <i>Product View</i> .

<pre>/Product:["<product command- line name>"] [/uninstall] [/silent] [/update]</pre>	<ul style="list-style-type: none"> • If no product name is supplied, this command line parameter enables a view of available products and products that have already been installed. • If a product name is supplied, the installer displays information about the supplied product only. <p> You cannot switch to <i>Package View</i>.</p>
<pre>/ForceWindowsRestart</pre>	<p>Restarts the workstation automatically when the installation is done.</p> <p>Use in combination with package and product after <code>/silent</code> or <code>/nodlg</code>.</p> <p>Example:</p> <pre><installation source>\setup\nwsapsetup.exe /silent /product="SAPGUI710" /ForceWindowsRestart</pre>
<pre>/noDlg</pre>	<p>Shows only the progress dialog</p> <p>Displays no other user interface. You can use it instead of <code>/silent</code>.</p> <p> If using <code>/noDlg</code>, you need to specify a product name or package name.</p>
<pre>/silent</pre>	<p>Displays no user interface – not even progress</p> <p> If using <code>/silent</code>, you need to specify a product name or package name.</p>
<pre>/SMS:["<package command-line name>"] [/noDlg] [/silent] [/uninstall]</pre>	<p>Creates a status file (Package Name.MIF) in the %TEMP% folder that indicates the success or failure of the package installation, or uninstallation.</p> <p>Typically used by software distribution systems such as SMS to determine the success or failure of a remote installation (advertised package installation).</p>

/uninstall	<p>Uninstalls components that belong to a specified product or a package</p> <p>This command-line parameter is valid only together with one of the following:</p> <p>/Product="Product Command-Line Name"</p> <p>/Package="Package Command-Line Name"</p> <p>/all for uninstalling all SAP components installed by SAPSetup; works only when supplied with /nodlg or /silent</p>
/update	<p>Updates components present in a newer version on the installation server due to a patch.</p> <p>To update a specific product or package, supply an additional parameter:</p> <p>/Product="Product Command-Line Name"</p> <p>or</p> <p>/Package="Package Command-Line Name"</p>

You can install multiple products using a single command with the + operator, as shown in the following examples:



```
\\ServerName\ShareName\Setup\NwSAPSetup.exe
/Product="SAPGUI710+SAPBI" /NoDlg
```

To uninstall multiple products, append the /uninstall command-line parameter.

5.7 Component List

The component list describes the features and functions of the selectable components, and the prerequisites for using them. The components are grouped under component groups.

List of Component Groups

Component Groups

Group	Description
SAP GUI Suite	SAP GUI for Windows 7.10 along with all essential sub-components
R/3 Add-On	<p>Front-end add-on for SAP R/3 Enterprise</p> <p>This package contains application extensions that are needed for some R/3 transactions.</p>
General Add-On	Front-end add-on that can be used to extend functionality of SAP systems and that are not restricted to one SAP Component
Legacy Components	<p>Components for the usage with older SAP releases (SAP R/3 4.6 and lower) or old Office products (Excel 95, ...).</p> <p>These components will only be needed if you intend to use this version of SAP GUI for Windows with your old SAP installations.</p>
BW Add-On	<p>Front-end add-on for SAP NetWeaver Business Intelligence (BI)</p> <p>Release-independent: Can be used in SAP BW 3.0B, SAP BW 3.5 and SAP NetWeaver 2004s. If used in SAP NetWeaver 2004s, only the SAP BW 3.5 capabilities are available.</p>

CRM Add-On	Front-end add-on for SAP Customer Relationship Management (CRM)
KW Add-On	Front-end add-on of SAP's Knowledge Management solution that includes all SAP training courses and all SAP documentation
SCM Add-On	Front-end add-on for of SAP Supply Chain Management (SCM)
SEM Add-On	Front-end add-on for SAP Strategic Enterprise Management (SEM)
SAP ISH Med Add-On	The planning grid is a graphical tool used for planning appointments in i.s.h.med. This component contains the latest version of the planning grid needed for i.s.h.med Release 7.0. The Sun Java Runtime Environment 1.4.2 or higher has to be installed on each client which runs the planning grid. Please, refer to SAP note 1013957 for further information.
Tweak GUI	<p>Tweak GUI is an alternative SAP GUI options dialog for easy configuration of the most prominent SAP GUI settings.</p> <p>The user receives direct feedback for any change he or she applies to the SAP GUI configuration. For this component the Microsoft .NET 2.0 Framework is required.</p>
SAP Automatic Workstation Update	<p>The automatic workstation update service is a new installer feature shipped with compilation 2. It works only when installed on the workstation. Whenever the installation server is patched, or the packages installed are updated, this service will update the workstation(s) and reboot them if necessary. The workstation updater works in two modes - one in the presence of a logged-on user and another in his absence:</p> <ul style="list-style-type: none"> • When a user is logged on, the user is informed of update availability and the update happens on the user's assent. The user is also informed if a reboot is necessary and the reboot is also only executed on the user's assent. • If no user is logged on, the update is done automatically and the reboot (if necessary) is done automatically, too.
Business Explorer	<p>You can perform a local installation of the Business Explorer by running <code>SAPBISetup.exe</code> from the <code>PRES1\GUI\WINDOWS\WIN32</code> subfolder of the <i>SAP NetWeaver Presentation DVD</i>. You can also import "Business Explorer" to an installation server and define your own packages to include this product.</p> <p>The Business Explorer tree node also contains the OLE DB for OLAP clients to connect to SAP NetWeaver Business Intelligence (BI).</p>

ECL	<p>Engineering Client Viewer enables you to view 2D and 3D files in the Document Management System.</p> <ul style="list-style-type: none"> • The following 2D formats are supported: 906, 907, bmp, c4, cgm, dwf, dwg, dxf, gif, hpgl, iges, jpeg, mdl, mi, mlr, mpc, ovl, pcx, pict, png, ps, ras, rvf, tg4, tiff, tlc, triff, txt • The following 3D formats are supported: JT, STL, VRML 1.0, for ECL versions lower than 6.0 refer to Note 381777 to use VRML 2.0 • ECL Viewer Release 6.0 supports additionally the following formats: VRML 2.0, PDF with redlining, AutoCAD 2007 (DWG), DGN, 902 <p>The viewer provides functions such as Redlining/Markup, Comparing, Measurement, Stamps and Watermarks, Rotating, Zooming, Printing. Additionally, Dynamic Assembly Viewing, and Cross Sectioning are supported for 3D files.</p>
-----	---



Changes With Compilation 2

There are two new components with compilation 2: SAP Automatic Workstation Update and SAP ISH Med Add-On.

Furthermore, KW Add-On, BW Add-On, Tweak GUI, and the ECL have moved up in the tree structure and can now be found on the same level as SAP GUI for Windows.

For detailed information see section 1.1 *What's New with Compilation 2?*.



Discontinued Products

- Adobe Forms Design Tool

This tool is no longer part of the standard SAP GUI installation but you can import as an additional product into an existing SAP GUI installation server. You can find the latest version of this product on the *SAP NetWeaver Presentation DVD*, which is available with the current version of the SAP GUI DVD, in folder `ADOBE_LC_D71`. More information: **SAP Note 801524**.


- Development Tools

These tools no longer exist as of SAP GUI for Windows 7.10:

- Component Graphical Screen Painter has been integrated into the component SAP GUI.
- Component Unicode RFC Libraries has moved to the component group SAP GUI and SAPForms is no longer supported. More information: **SAP Note 627397**.
- The Forms Design Tool is no longer available with the current version of the SAP GUI CD. More information: **SAP Note 801524**.

List of Available Components

SAP GUI Suite


Component	Description
SAP GUI	SAP graphical front end with starter application SAP Logon Pad The user can only display preconfigured connection information for SAP systems provided by the administrator (see documentation for details).
SAP Logon Pad	Desktop and <i>Start</i> menu shortcuts for SAP Logon Pad  The functionality of SAP Logon Pad is fully contained in SAP Logon. Therefore these shortcuts are only created if SAP Logon is not selected.
SAP Logon	Extended starter application SAP Logon with desktop and <i>Start</i> menu shortcuts The user can display and modify connection information for SAP systems.
SAP GUI Scripting	SAP GUI scripting interface More information: <code>SAP_GUI_Scripting_API.pdf</code> from the <code>PRES1/DOCU</code> folder on the <i>SAP NetWeaver Presentation DVD</i>
GUI XT	SAP GUI extensions for client side customizing of SAP Dynpro screens
Shortcut to SAPIpd	Routing program for print output on Microsoft Windows PCs SAPIpd is addressed using a network connection or locally using SAP GUI. If it is used over a network connection, the PC must have a fixed IP address, and SAPIpd must be started manually before printing.
Unicode RFC Libraries	Unicode RFC libraries for software developers Supports Unicode and non-Unicode communication partners Accessible from Visual Basic through COM Interface

R/3 Add-On

Component	Description
EC-CS: Remote Data Entry	Module EC: Data input and validation of reported financial data without a connection to an SAP system Requires Microsoft Access 97
FI-LC: Remote Data Entry	Module FI: Data input and validation of reported financial data without a connection to an SAP system Requires Microsoft Access 97
Interactive Excel	Module FI or EC: Add-on to Microsoft Excel for creating reports in Microsoft Excel using data from FI-LC or EC-CS consolidation Excel sheets can be filled with data from the SAP system or the Remote Data Entry tools for FI-LC and EC-CS. It can be used for data entry into the FI-LC or EC-CS Remote Data Entry tool. Requires Microsoft Excel 97

CA-CAD Interface	Module CA: CAD interface of the SAP system
EC-EIS: Microsoft Word Link	Module EC /Executive Information System Transfer of report data to Microsoft Word. Requires Microsoft Word 97 or 2000
PD: Microsoft Excel Link	Module PT/ Shift Planning Allows you to display the SAP duty roster data with Microsoft Excel. Requires Microsoft Excel
PS: Export Interfaces	Module PS: Export of project data in the formats GRANEDA, Microsoft Access and MPX Requires Graneda, Microsoft Project 4, or any other program that can read Microsoft Access 7 data
Solution Manager Controls	Controls used by the SAP Solution Manager They add new graphical formats like the visualization of your business processes or your system landscapes.
EH&S WWI	Module EH&S: Windows Word Processor Integration Report tool for mySAP PLM Environment, Health and Safety to generate reports such as material safety data sheets and labels RTF Viewer required, Microsoft Windows 2000 or XP recommended.

General Add-On

Component	Description
SAPphone Call Status Control	The SAPphone Call Status Control permits the raising of events to inform the SAPphone softphone user interface about telephony call state changes. The control itself has no user interface.  It must not be reused by other components other than SAPphone.
SAPphone Server	Tool to connect the SAP system to telephone systems and call centers
Calendar Synchronization for Microsoft Outlook	Outlook client extension for the synchronization of SAPoffice calendar with the Outlook calendar Requires Microsoft Outlook 98 or higher
Graphical Distribution Network	Display and maintenance of a distribution network inside a corporation



With compilation 2, the ECL Viewer has moved up in the tree structure and can be now found on the same level as SAP GUI for Windows.



The component SAP (WEB) Console is not part of the delivery of SAP GUI for Windows 7.10. If you need this component, keep using SAP GUI for Windows 6.40 on the affected servers.


More information: **SAP Note 1017827**



Microsoft Outlook Integration is no longer supported and therefore has been removed from the *SAP NetWeaver Presentation DVD*.

More information: **SAP Note 627397**

Legacy Components

Component	Description
Microsoft Word Link via RFC	Installation of Word connection for SAP R/3 3.x, and 4.0B Requires Microsoft Word 6, 95, 97, or 2000
Report Writer: Microsoft Excel Link	Import filter for Microsoft Excel: converts a file exported by Report Writer in Excel format (RPW format) into an Excel spreadsheet Works with Excel 95, 97, or 2000  Used with SAP System Releases 3.1 to 4.5 only.

XXL List Viewer is no longer available on the *SAP NetWeaver Presentation DVD*.

More information: **SAP Note 526579**

BW Add-On

Component	Description
Business Explorer (SAP BW 3.x)	Business Intelligence Suite of SAP BW 3.0B / 3.5 Provides tools for analysis and reporting
Merchandise and Assortment Planning	Front-end add-on for SAP for Retail: SAP Merchandise and Assortment planning Provides tools for planning

CRM Add-On

Component	Description
CRM Front End	Front-end add-on of SAP Customer Relationship Management (CRM)

KW Add-On

Component	Description
KW Knowledge Workbench	Authoring tool to easily maintain SAP documentation and SAP training Requires Microsoft Internet Explorer 5 or higher
KW Online Editing	Knowledge Warehouse Editing within SAP GUI Requires Microsoft Internet Explorer 5 or higher
KW Translator	Knowledge Warehouse Translator: Translation tool to process translation packages offline Requires Microsoft Internet Explorer 5 or higher

PAW Author	Performance Assessment Workbench Author Authoring tool to easily maintain test items, performance units, performance tests and surveys Requires Microsoft Internet Explorer 5 or higher
KW Viewer	Viewing tool to display training courses offline

SAP ISH Med Add-On

Component	Description
SAP ISH Med Add-On	The planning grid is a graphical tool used for planning appointments in i.s.h.med. This component contains the latest version of the planning grid needed for i.s.h.med Release 7.0. The Sun Java Runtime Environment 1.4.2 or higher has to be installed on each client which runs the planning grid. Please, refer to SAP note 1013957 for further information.

SCM Add-On

Component	Description
SCM Front End	Front-end add-on of SAP Supply Chain Management (SCM)

SEM Add-On

Component	Description
Balanced Scorecard	Balanced scorecard presentation
Graphical Assignment	Graphical assignment tool
Sales Planning	Sales planning Add-In to Microsoft Excel Requires Microsoft Office 97 or Microsoft Office 2000 You can use this Add-In to extend your local Microsoft Excel to enable Sales Planning within Excel environment as part of Customer Relationship Analytics. Requires Microsoft Excel 97 or 2000